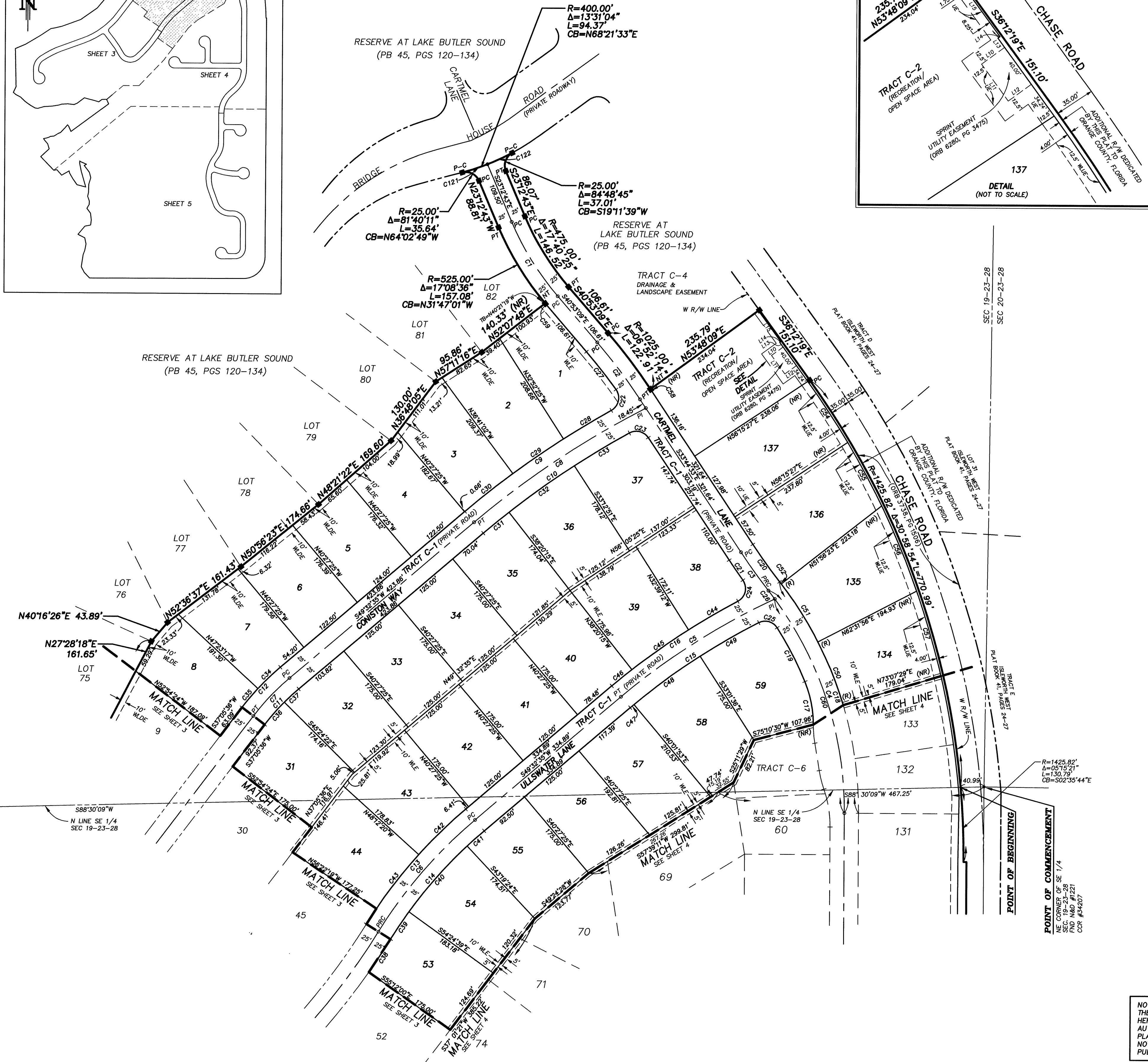
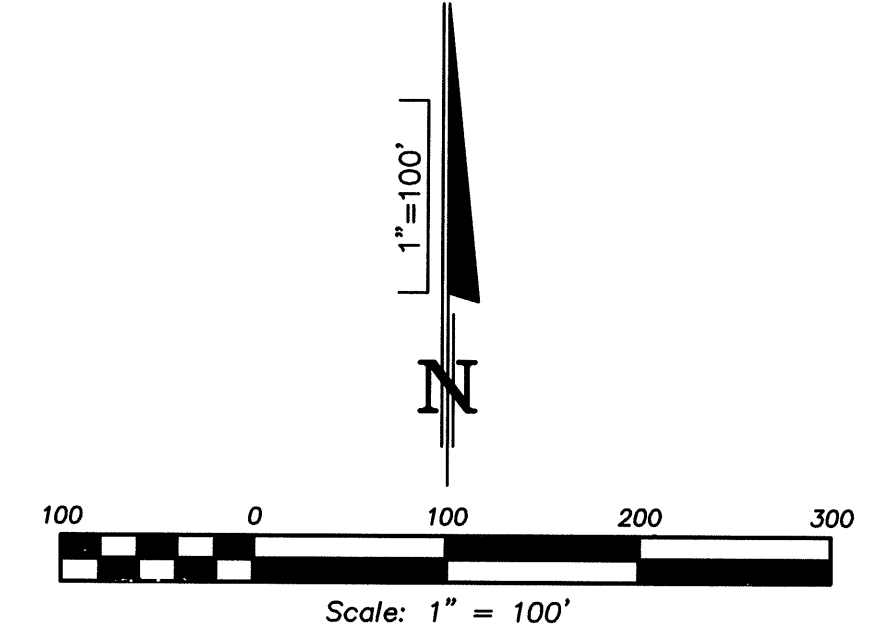
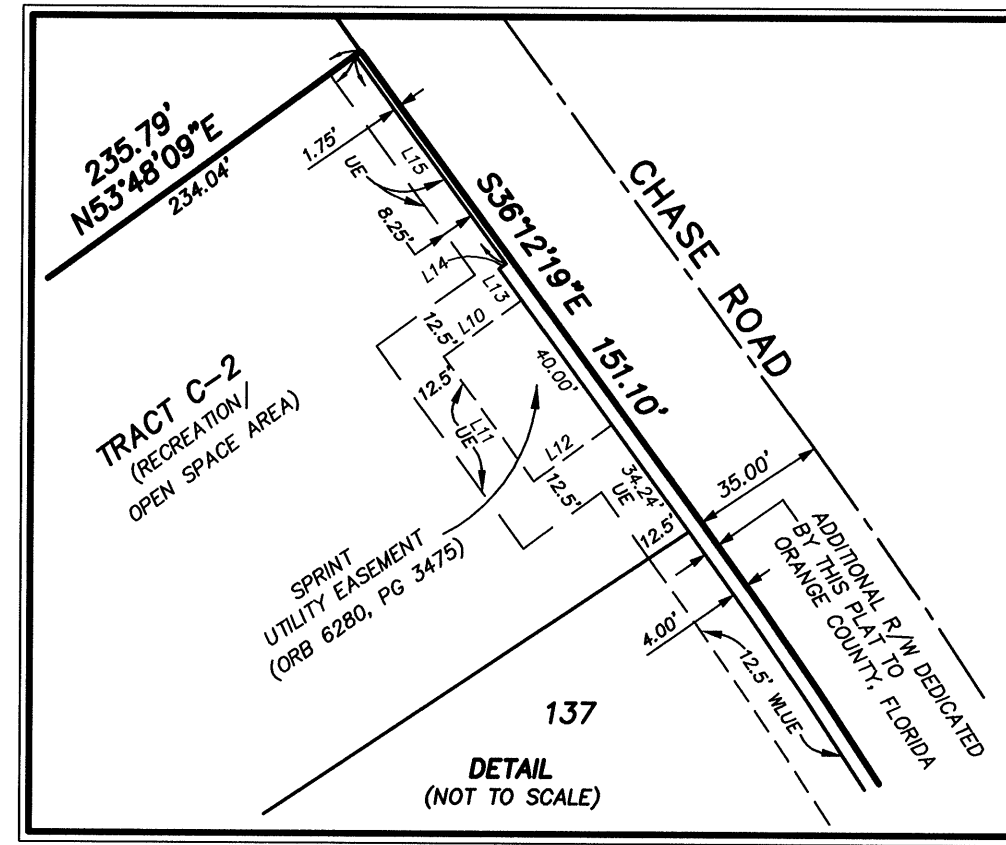
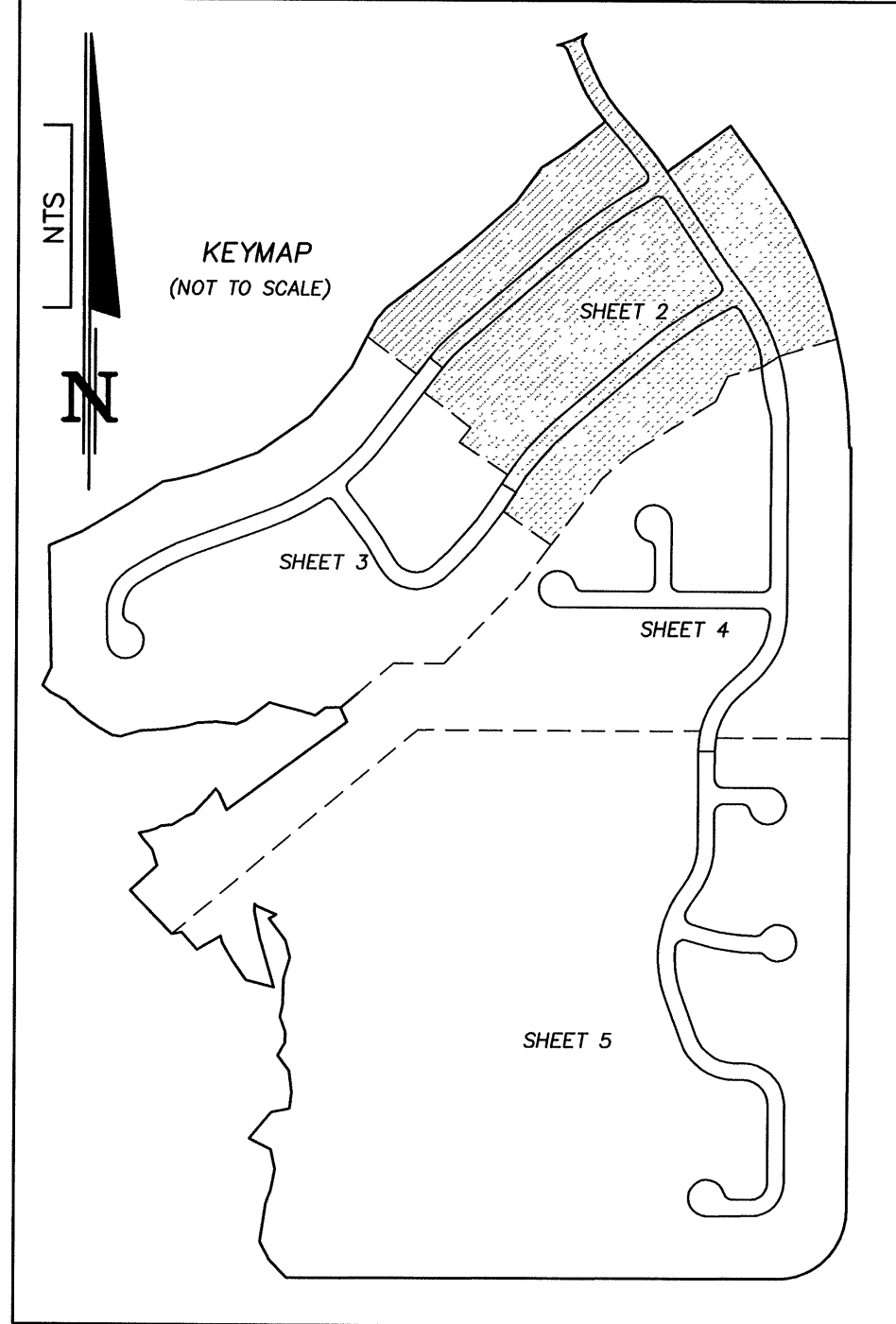


# RESERVE AT LAKE BUTLER SOUND UNIT 2

## SECTION 19, TOWNSHIP 23 SOUTH, RANGE 28 EAST

### ORANGE COUNTY, FLORIDA



**LINE TABLE - THIS SHEET ONLY (ALL DISTANCES ARE IN FEET)**

NUMBER	BEARING	DISTANCE
L10	S53°47'41\"/>	

**CURVE TABLE - THIS SHEET ONLY (ALL DISTANCES ARE IN FEET)**

NUMBER	RADIUS	DELTA	LENGTH	CHORD	TANGENT	CHORD BEARING
C1	500.00	17°40'25\"/>				

NOTICE: THIS PLAT, AS RECORDED IN ITS GRAPHICAL FORM, IS THE OFFICIAL DEPICTION OF THE SUBDIVIDED LANDS DESCRIBED HEREIN AND WILL IN NO CIRCUMSTANCES BE SUPPLANTED IN AUTHORITY BY ANY OTHER GRAPHICAL OR DIGITAL FORM OF THE PLAT. THERE MAY BE ADDITIONAL RESTRICTIONS THAT ARE NOT RECORDED ON THIS PLAT THAT MAY BE FOUND IN THE PUBLIC RECORDS OF THIS COUNTY.

**DONALD W. MCINTOSH ASSOCIATES, INC.**  
 ENGINEERS PLANNERS SURVEYORS  
 2200 PARK AVENUE NORTH, WINTER PARK, FLORIDA 32789 (407) 644-4068  
 Certificate of Authorization Number LB68

File Name: F:\PROJ\2000\20004\SDWG\PLAT1\C-1sh12.DWG