

RESERVE AT LAKE BUTLER SOUND UNIT 2

SECTION 19, TOWNSHIP 23 SOUTH, RANGE 28 EAST

ORANGE COUNTY, FLORIDA

SHEET 1 OF 5

PLAT BOOK **47** PAGE **127**

RESERVE AT LAKE BUTLER SOUND UNIT 2 DEDICATION

THIS IS TO CERTIFY that the undersigned, Pulte Home Corporation, a Michigan corporation, (hereinafter referred to as "Owner") is the lawful record owner of the lands described in the caption of this Plat, that Owner has caused said lands to be surveyed and this Plat made in accordance with said survey and that this Plat is hereby adopted as the true and correct Plat of said lands. Except as expressly provided in and shown on this Plat, no part of said lands is hereby dedicated to Orange County, Florida or to the general public. None of the lands designated on this Plat as "Common Property" is required for public use and, accordingly, such Common Property is not and will not become a part of the Orange County public road system or stormwater management/drainage system. Instead, such Common Property is part of the "Common Property" as defined in and created by, and is and will hereafter be subject to, the terms and provisions of that certain Declaration of Covenants, Conditions, Restrictions, Easements and Reservations for Lake Butler Sound executed by Owner dated November 16, 2000 and recorded on December 1, 2000 in Official Records Book 6141 at Pages 3541 et seq. of the Public Records of Orange County, Florida (hereinafter referred to as "Declaration"). Said Common Property is and shall remain the sole and exclusive private property of Owner until hereafter transferred and conveyed by Owner to Lake Butler Sound Community Association, Inc., a Florida corporation not-for-profit, (the "Association") as provided in, and pursuant to the terms of, the Declaration. Owner does hereby, and pursuant to the Declaration, grant and convey to all present and future owners of the lots shown hereon and all present and future members of the Association and their respective tenants, guests and invitees, and to all private entities and public agencies providing mail, utility, fire protection, law enforcement, emergency medical and other governmental services, including the United States Postal Service and Orange County, a non-exclusive, perpetual easement for pedestrian and vehicular ingress, egress and passage over and upon such roads ("Cartmel Lane", "Coniston WAY", "Uliswater LANE", "Hawkhead Court", "Rydal Court", "Kentmere Court", & "Wadadole Court") and their associated sidewalks as may from time to time be located on Tract C-1 of the Common Property. Said Common Property is not hereby or otherwise dedicated to the use and enjoyment of the general public, but is reserved solely for the common use and enjoyment of the owners of the lots shown hereon and all present and future members of the Association from time to time. The nature and extent of and the reservations and restrictions on such common use and enjoyment of the Common Property are more fully set forth in the Declaration. NOTWITHSTANDING the foregoing, an emergency access and maintenance easement to and upon the private stormwater management/drainage system located on Tracts C-3, C-4, C-5 and C-7 and within all Drainage Easements shown on this Plat is hereby granted and dedicated to Orange County for emergency access and maintenance purposes in the event inadequate maintenance of such stormwater management/drainage system by the Association creates a hazard to the public health, safety and general welfare. However, the emergency access and maintenance easement granted and dedicated herein does not and shall not impose upon Orange County any obligation, burden, responsibility or liability to enter upon the lands described herein in order to take any action to repair or maintain such private stormwater management/drainage system. A non-exclusive easement over, under, upon, through and across Tract C-1 and all Utility Easements shown on this Plat is hereby dedicated to and for use by all public utilities providers for the purpose of constructing, maintaining, repairing and replacing their respective utility facilities which service the lands encompassed by this Plat. Owner hereby grants, conveys and dedicates to Orange County and the general public additional right-of-way for Chase Road as more particularly shown on this Plat.

IN WITNESS WHEREOF, the undersigned, Pulte Home Corporation, has caused these presents to be executed and acknowledged by its undersigned officer thereunto duly authorized on this 14 day of June, 2001.

PULTE HOME CORPORATION,
a Michigan corporation
555 Winderley Place, Suite 420
Maitland, FL 32751

By: Charles E. Cook
Its Attorney-in-Fact

Printed Name of Witness
Janith L. Duncan

CORPORATE SEAL

STATE OF FLORIDA
COUNTY OF ORANGE
The foregoing Dedication was executed and acknowledged before me on this 14 day of June, 2001, by Charles E. Cook, Attorney-in-Fact for Pulte Home Corporation, a Michigan corporation, on behalf of said corporation. He is personally known to me on the date of this Dedication.

Signature of Notary Public
Laura Karolene Cigainero

My Commission Expires: 7-20-2003

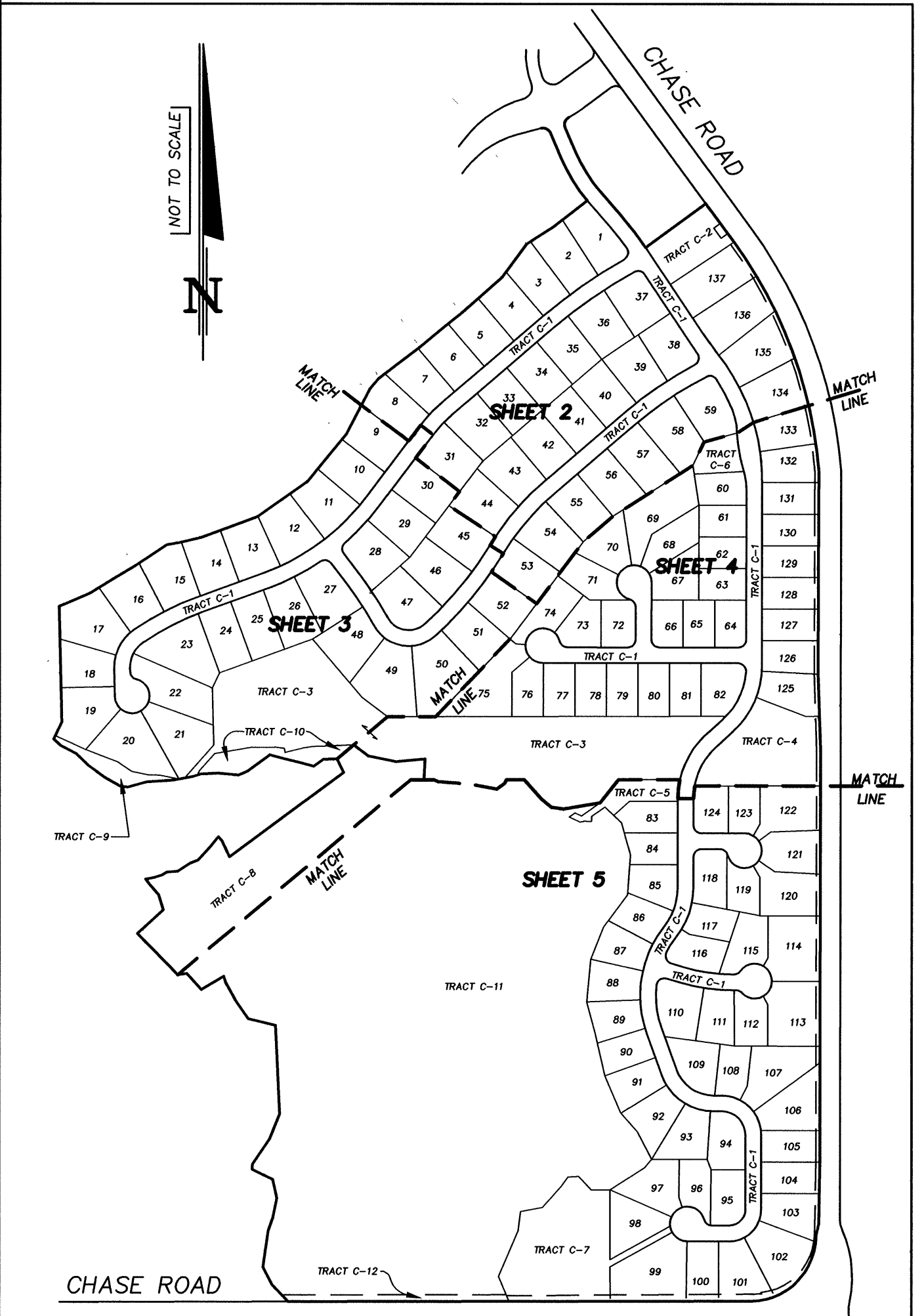
- NOTES:
- P.R.M. indicates Permanent Reference Monument: Set 4"x4" concrete monument #LB68 or Found 4"x4" concrete monument #LS 5633 per Chapter 177, Florida Statutes (unless otherwise noted).
 - P.C.P. indicates Permanent Control Point to be set per Chapter 177, Florida Statutes as certified thereto (#LB68)
 - Bearings based on the North line of the Southeast 1/4 of Section 19, Township 23 South, Range 28 East, Orange County, Florida, being S 88°30'09" W, (an assumed meridian).
 - All lines intersecting curves are radial unless otherwise noted as (NR) non-radial.
 - Tract "C-1" of the Common Area is a Private Road to be owned and maintained by the Butler Sound Community Association, Inc.
 - Tract "C-2" of the Common Area is a Recreation / Open Space Area to be owned and maintained by the Butler Sound Community Association, Inc.
 - Tracts "C-3", "C-4" and "C-7" of the Common Area are Stormwater Management Areas to be owned and maintained by the Butler Sound Community Association, Inc.
 - Tracts "C-5", "C-6", and "C-8" of the Common Area are Open Space Areas to be owned and maintained by the Butler Sound Community Association, Inc.
 - Tracts "C-9", "C-10", and "C-11" are Conservation Areas to be owned and maintained by the Butler Sound Community Association, Inc.
 - Tract C-12 is a wall, landscape and open space area to be owned and maintained by the Butler Sound Community Association, Inc.
 - Landscape and wall easements shown hereon are hereby dedicated to and are to be maintained by the Lake Butler Sound Community Association, Inc.
 - Numbered "C-Tracts" shown hereon are "Common Property", as more particularly defined in the Declaration to which reference is made in the Dedication on this Plat.
 - Utility Easements shown hereon include easements for the construction, installation, maintenance and operation of cable television services, subject to statutory limitations thereof.
 - Drainage Easements shown hereon are dedicated to Lake Butler Sound Community Association, Inc. and are subject to the rights of Orange County granted in the Declaration on this Plat.
 - Wall and Landscape Easements shown hereon are dedicated to and maintained by the Lake Butler Sound Community Association, Inc.
 - The lands described hereon are subject to certain other easements as more particularly provided in the Declaration to which reference is made in the Dedication on this Plat and in other instruments recorded among the Public Records of Orange County.
 - Development rights to Tracts "C-9", "C-10", and "C-11" and the Conservation Easements shown hereon are dedicated to Orange County, Florida. No construction, clearing, grading or alteration of these areas is permitted without prior approval of Orange County, Florida, and all other applicable regulatory agencies.
 - In accordance with the Declaration, drainage easements are hereby reserved within all lots as follows:
10' along all street rights-of-way
5' along all side lot lines
5' along all rear lot lines
 - In accordance with the Declaration, utility easements are hereby reserved within all lots as follows:
10' along all street rights-of-way
 - Vehicular access locations to Chase Road from Lots 99 through 107, 113, 114, 120 through 122, 125 through 137 and Tracts C-2, C-4, C-7 and C-12 are controlled and permitted by Orange County, Florida.

DESCRIPTION:

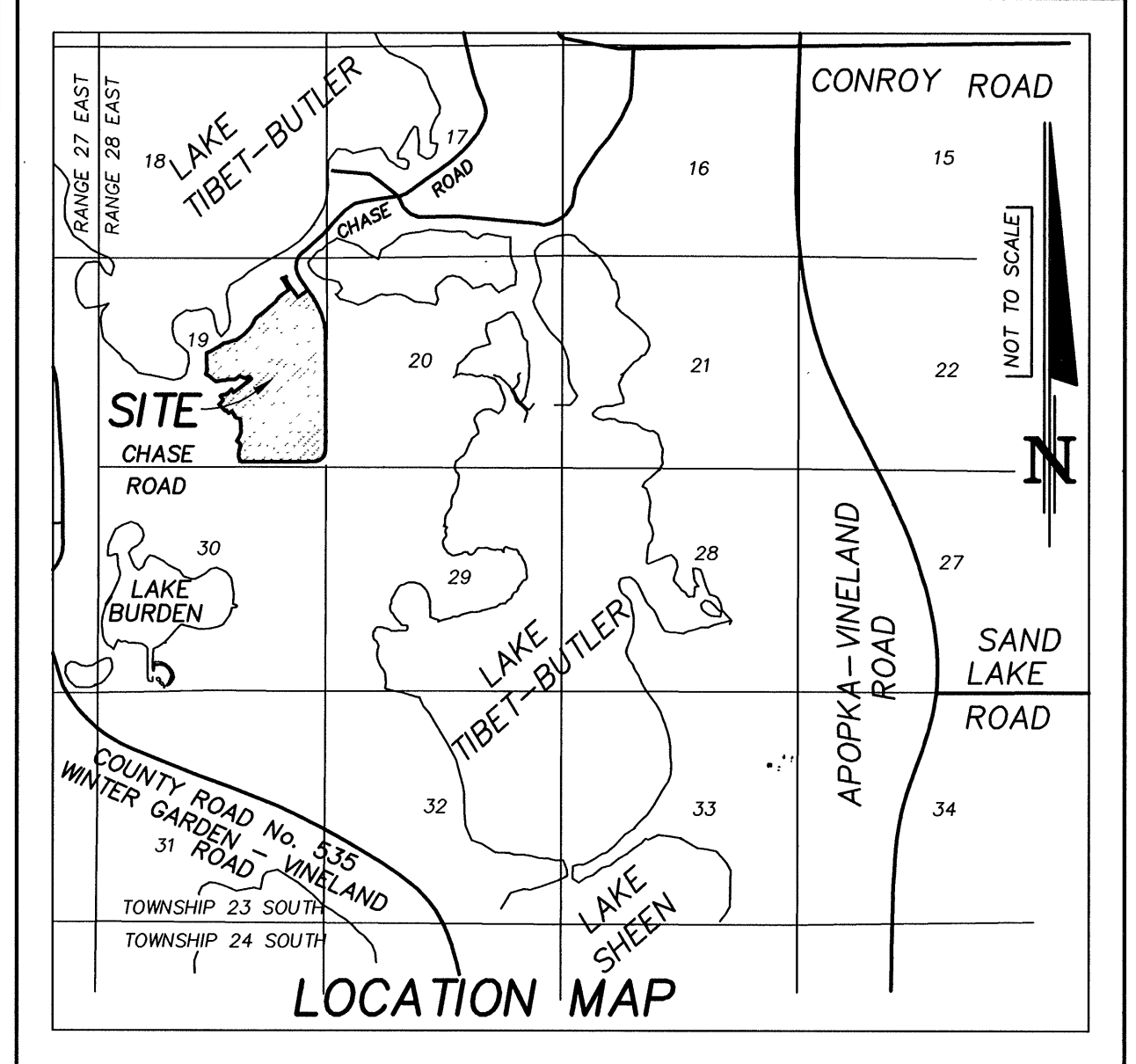
That part of Section 19, Township 23 South, Range 28 East, Orange County, Florida, being described as follows:

Commence at the Northeast corner of the Southeast 1/4 of said Section 19; thence run S 88°30'09" W along the North line of said Southeast 1/4 of said Section 19 for a distance of 40.99 feet to the West right-of-way line of Chase Road, said right-of-way as described in Official Records Book 3738, Page 1506, of the Public Records of Orange County, Florida, and to a point on a non-tangent curve concave Southwesterly having a radius of 1425.82 feet and a chord bearing of S 02°35'44" E, said point also being the POINT OF BEGINNING; thence run Southerly along said West right-of-way line and along the arc of said curve through a central angle of 05°15'21" for a distance of 130.79 feet to a point of non-tangency; thence run S 89°58'35" E along said West right-of-way line for a distance of 5.00 feet; thence run S 00°01'25" W along the West right-of-way line of Chase Road as described in Deed Book 400, Page 334 and Deed Book 396, Page 68, of the Public Records of Orange County, Florida, for a distance of 2297.87 feet to the point of curvature of a curve concave Northwesterly having a radius of 210.00 feet; thence run Southwesterly along said West right-of-way line and the North right-of-way line of said Chase Road as described in Deed Book 396, Page 68, and the arc of said curve through a central angle of 80°51'44" for a distance of 329.36 feet to the point of tangency; thence run S 89°53'08" W along said North right-of-way line for a distance of 1479.27 feet; thence run N 44°26'28" W for a distance of 73.90 feet; thence run N 27°15'49" W for a distance of 63.72 feet; thence run N 08°30'02" E for a distance of 115.32 feet; thence run N 19°39'28" E for a distance of 42.11 feet; thence run N 11°39'33" E for a distance of 64.95 feet; thence run N 12°19'52" W for a distance of 62.07 feet; thence run N 63°57'40" W for a distance of 72.79 feet; thence run N 08°12'11" E for a distance of 16.81 feet; thence run N 33°47'24" E for a distance of 97.43 feet; thence run N 22°06'59" E for a distance of 82.86 feet; thence run N 02°42'12" W for a distance of 282.63 feet; thence run N 76°48'57" W for a distance of 88.65 feet; thence run N 34°51'26" W for a distance of 66.47 feet; thence run N 29°52'25" W for a distance of 68.47 feet; thence run N 14°37'29" W for a distance of 20.30 feet; thence run S 60°05'37" W for a distance of 82.80 feet; thence run N 42°19'31" W for a distance of 67.79 feet; thence run S 82°28'42" W for a distance of 29.89 feet; thence run N 44°29'14" W for a distance of 182.12 feet to the boundary line of RESERVE AT LAKE BUTLER SOUND, as recorded in Plat Book 45, Pages 120 through 134 of the Public Records of Orange County, Florida; thence run the following 67 courses and distances along the boundary lines of said RESERVE AT LAKE BUTLER SOUND: N 47°35'34" E, a distance of 111.47 feet; N 18°02'50" W, a distance of 49.37 feet; N 41°02'44" W, a distance of 44.60 feet; N 34°22'21" W, a distance of 19.71 feet; N 77°42'12" E, a distance of 25.19 feet; N 73°32'02" E, a distance of 27.72 feet; N 58°57'50" E, a distance of 17.31 feet; N 85°49'04" E, a distance of 34.69 feet; N 57°13'58" E, a distance of 47.93 feet; N 67°52'13" E, a distance of 26.71 feet; N 43°12'38" E, a distance of 56.52 feet; N 39°18'01" E, a distance of 41.14 feet; S 39°33'55" E, a distance of 18.13 feet; S 25°28'16" E, a distance of 53.76 feet; N 53°35'50" E, a distance of 44.81 feet; N 26°11'05" W, a distance of 47.76 feet; S 88°06'43" W, a distance of 43.69 feet; S 54°13'03" W, a distance of 37.72 feet; N 74°34'16" W, a distance of 43.08 feet; N 76°31'12" W, a distance of 56.35 feet; N 75°16'29" W, a distance of 44.34 feet; S 53°40'51" W, a distance of 88.08 feet; S 67°16'29" W, a distance of 31.81 feet; N 84°09'47" W, a distance of 62.42 feet; S 87°02'05" W, a distance of 55.56 feet; S 72°11'25" W, a distance of 28.89 feet; S 80°11'24" W, a distance of 64.75 feet; S 86°08'12" W, a distance of 80.14 feet; S 74°32'19" W, a distance of 62.84 feet; N 83°12'54" W, a distance of 23.82 feet; N 60°36'15" W, a distance of 54.08 feet; N 54°38'34" W, a distance of 39.11 feet; N 53°05'50" W, a distance of 27.97 feet; N 45°48'51" W, a distance of 54.34 feet; N 62°36'16" W, a distance of 56.18 feet; N 49°25'46" W, a distance of 28.64 feet; N 25°37'35" E, a distance of 59.95 feet; N 01°19'31" W, a distance of 366.54 feet; N 66°52'33" E, a distance of 65.96 feet; N 68°54'58" E, a distance of 42.09 feet; N 58°47'19" E, a distance of 83.06 feet; N 58°48'21" E, a distance of 84.29 feet; N 56°25'05" E, a distance of 118.05 feet; N 79°58'20" E, a distance of 38.48 feet; N 76°48'00" E, a distance of 70.66 feet; N 69°38'00" E, a distance of 193.54 feet; N 54°57'25" E, a distance of 193.22 feet; N 39°36'40" E, a distance of 193.22 feet; N 27°28'18" E, a distance of 161.65 feet; N 40°16'26" E, a distance of 43.89 feet; N 52°36'37" E, a distance of 161.43 feet; N 50°56'23" E, a distance of 174.66 feet; N 48°21'22" E, a distance of 169.80 feet; N 36°48'05" E, a distance of 130.00 feet; N 57°11'16" E, a distance of 95.86 feet; N 52°07'48" E, a distance of 140.33 feet to a point on a non-tangent curve concave easterly and having a radius of 525.00 feet; thence from a tangent bearing of N 40°21'19" W run Northerly along the arc of said curve through a central angle of 17°08'36" for a distance of 157.08 feet to the point of tangency; N 23°12'43" W, a distance of 88.81 feet to a point of curvature of a curve concave Southwesterly and having a radius of 25.00 feet; thence run Westerly along the arc of said curve through a central angle of 81°40'11" for a distance of 35.64 feet to a point of cusp of a curve concave Northwesterly and having a radius of 400.00 feet; thence run Northeasterly along the arc of said curve through a central angle of 13°31'04" for a distance of 94.37 feet to the point of cusp of a curve concave Easterly and having a radius of 25.00 feet; thence run Southerly along the arc of said curve through a central angle of 84°48'46" for a distance of 37.01 feet to a point of tangency; N 23°12'43" E, a distance of 86.07 feet to the point of curvature of a curve concave Easterly and having a radius of 475.00 feet; thence run Southerly along the arc of said curve through a central angle of 17°40'25" for a distance of 146.52 feet to the point of tangency; S 40°53'09" E, a distance of 106.61 feet to the point of curvature of a curve concave Westerly and having a radius of 1025.00 feet; thence run Southerly along the arc of said curve through a central angle of 06°52'14" for a distance of 122.91 feet to a point of non-tangency; N 53°48'09" E, a distance of 235.79 feet to said West right-of-way line of Chase Road; thence run S 36°12'19" E along said West right-of-way line for a distance of 151.10 feet to the point of curvature of a curve concave Southwesterly having a radius of 1425.82 feet; thence run Southeasterly along said West right-of-way line and the arc of said curve through a central angle of 30°58'54" for a distance of 770.99 feet to the POINT OF BEGINNING.

Containing 139.426 acres more or less.



SHEET INDEX



LOCATION MAP

- LEGEND (ALL SHEETS)
- CS3 = CURVE NUMBER (SEE TABLE)
 - L14 = LINE NUMBER (SEE TABLE)
 - Δ = CENTRAL ANGLE
 - R = RADIUS
 - L = ARC LENGTH
 - CB = CHORD BEARING
 - ε = CENTERLINE
 - P-C = POINT OF CURVATURE
 - M&D = NAIL AND DISC
 - TB = TANGENT BEARING
 - FND = FOUND
 - R/W = RIGHT-OF-WAY
 - NT = NON-TANGENT
 - (NR) = NON-RADIAL
 - (R) = RADIAL
 - PT = POINT OF TANGENCY
 - PC = POINT OF CURVATURE
 - PC = POINT OF CURVATURE
 - PRC = POINT OF REVERSE CURVATURE
 - ORB = OFFICIAL RECORDS BOOK
 - PB = PLAT BOOK
 - FR(S) = PAGE(S)
 - DE = DRAINAGE EASEMENT
 - UE = UTILITY EASEMENT
 - D & U E = DRAINAGE AND UTILITY EASEMENT
 - IR = IRON ROD
 - IP = IRON PIPE
 - CM = CONCRETE MONUMENT
 - LB = LICENSED BUSINESS
 - PLS = PROFESSIONAL LAND SURVEYOR
 - WLE = WALL AND LANDSCAPE EASEMENT
 - WLDE = WALL, LANDSCAPE AND DRAINAGE EASEMENT
 - WLUE = WALL, LANDSCAPE AND UTILITY EASEMENT
 - CCR = CERTIFIED CORNER RECORD
 - SEC. X-Y-Z = SECTION X, TOWNSHIP Y SOUTH, RANGE Z EAST
 - UCE = UPLAND CONSERVATION EASEMENT

**CERTIFICATE OF REVIEW
BY COUNTY SURVEYOR**

This plat has been reviewed for conformity with Chapter 177, Florida Statutes.

Adam J. McKee 6/28/01
County Surveyor Date

NOTICE: THIS PLAT, AS RECORDED IN ITS GRAPHICAL FORM, IS THE OFFICIAL DEPICTION OF THE SUBDIVIDED LANDS DESCRIBED HEREIN AND WILL IN NO CIRCUMSTANCES BE SUPPLANTED IN AUTHORITY BY ANY OTHER GRAPHICAL OR DIGITAL FORM OF THE PLAT. THERE MAY BE ADDITIONAL RESTRICTIONS THAT ARE NOT RECORDED ON THIS PLAT THAT MAY BE FOUND IN THE PUBLIC RECORDS OF THIS COUNTY.

**CERTIFICATE OF APPROVAL BY BOARD
OF COUNTY COMMISSIONERS**

THIS IS TO CERTIFY, that on June 14, 2001 the foregoing plat was approved by the Board of County Commissioners of Orange County, Florida.

Robert B. Sindler
County Chairman

Martha D. Haynie
Clerk of the Board

Janna Y. Wells
ASST. DC

**CERTIFICATE OF APPROVAL
BY COUNTY ENGINEER**

Examined and Approved William H. Bell 6/29/01
County Engineer Date

**CERTIFICATE OF APPROVAL
BY ZONING DIRECTOR**

Examined and Approved Walter H. 6/29/01
Zoning Director Date

**QUALIFICATION AND STATEMENT
OF SURVEYOR AND MAPPER**

This plat was prepared under my direction and supervision. This plat complies with all of the survey requirements of Chapter 177, Florida Statutes.

DONALD W. McINTOSH ASSOCIATES, INC.
Certificate of Authorization Number LB68
2200 Park Avenue North, Winter Park, FL 32789

Date: June 14, 2001 BY: Scott Grossman
Florida Registered Surveyor and Mapper
Certificate No. 5048

CERTIFICATE OF COUNTY COMPTROLLER

I HEREBY CERTIFY, that I have examined the foregoing plat and find that it complies in form with all the requirements of Chapter 177, Florida Statutes, and was filed for record on June 14, 2001 at 1:19 PM in the County Comptroller's Office, Winter Park, Florida, and for Orange County, Florida.

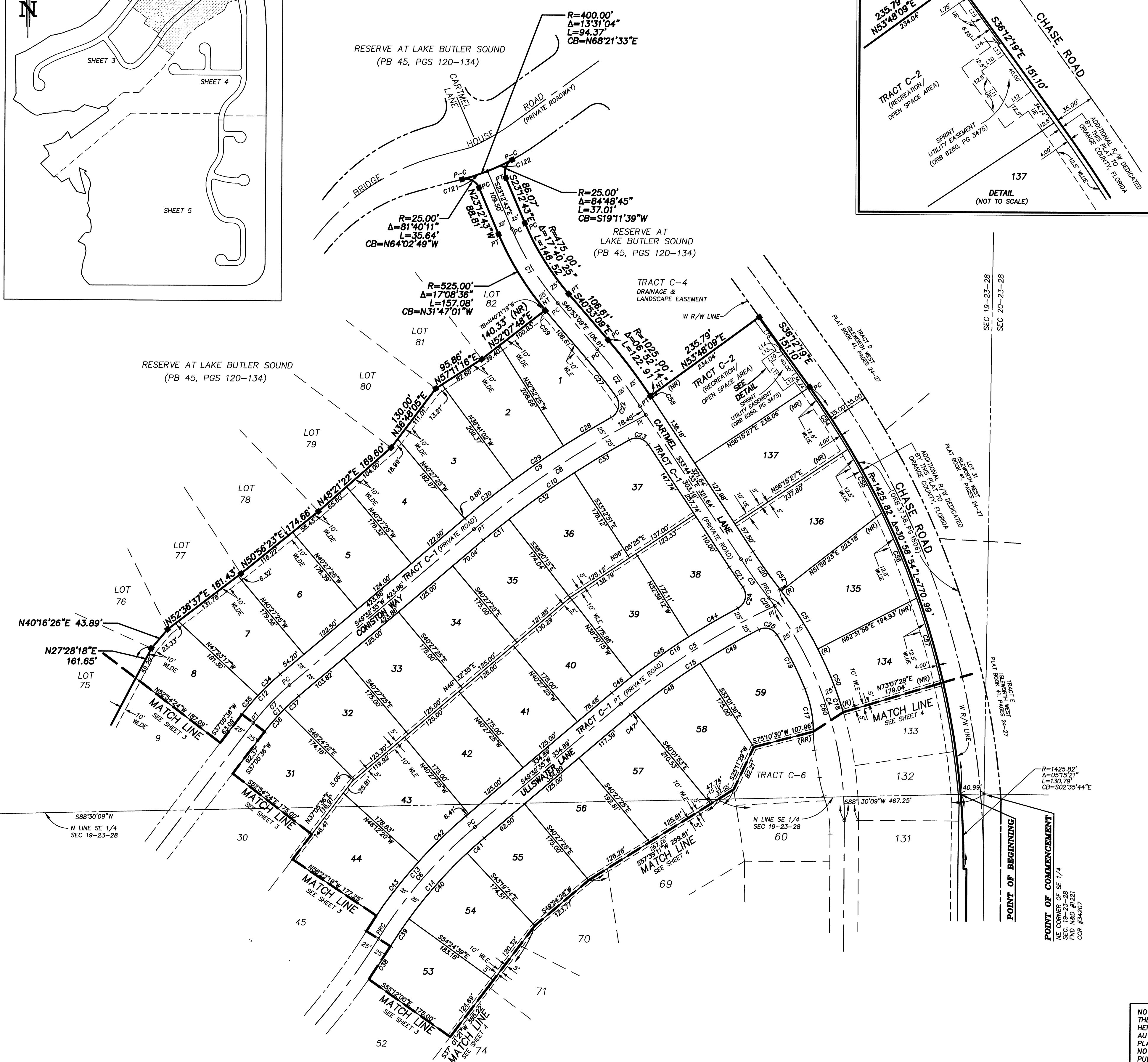
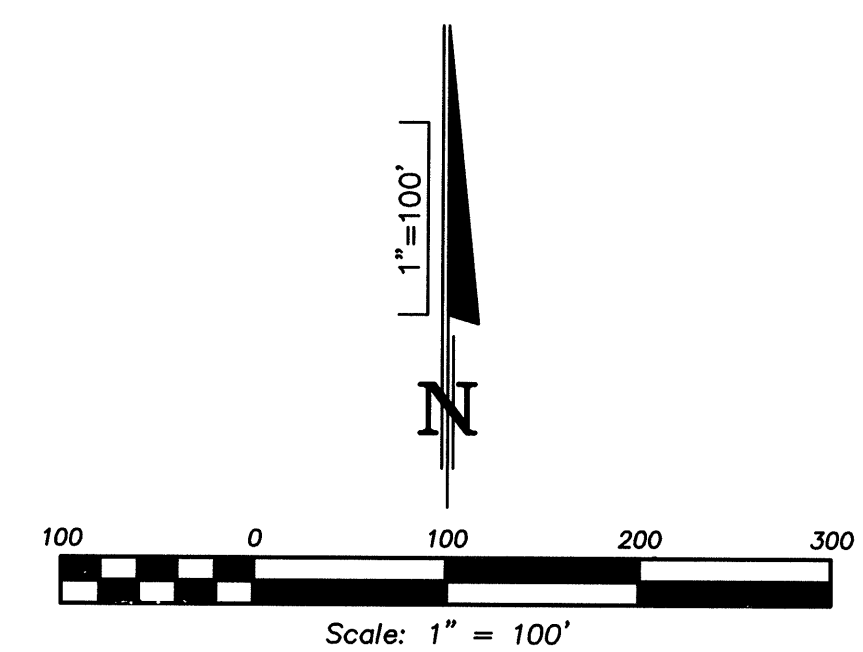
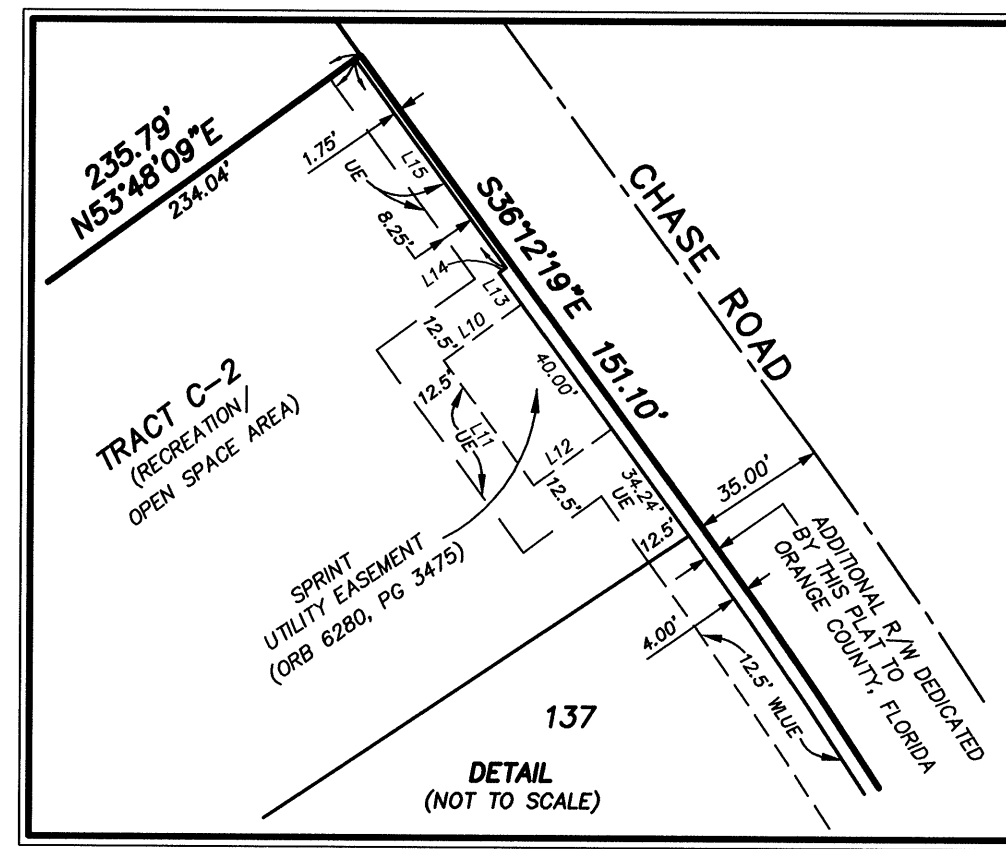
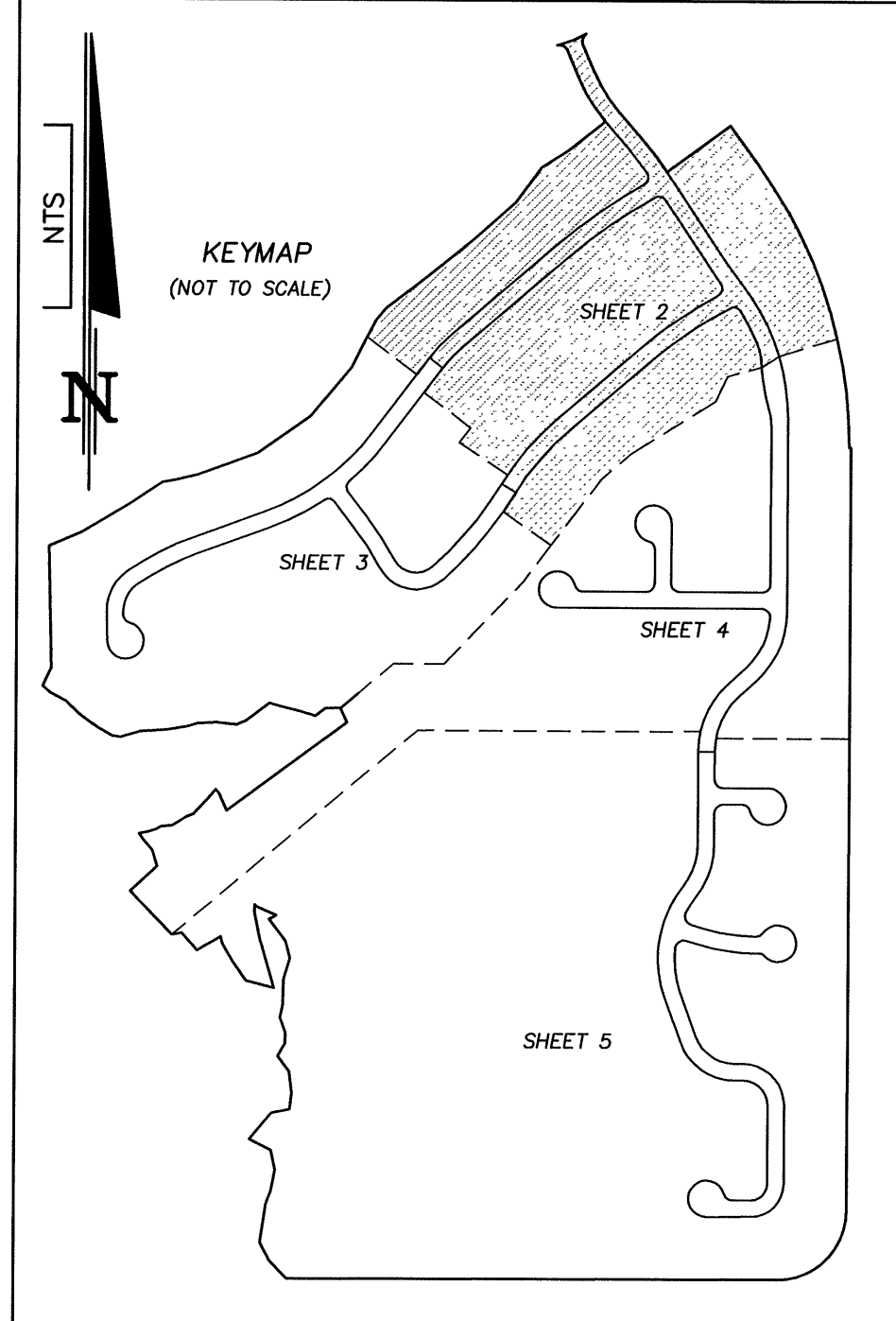
Martha D. Haynie
By: Ann Marie Alkon S.C.

PREPARED BY:
DONALD W. McINTOSH ASSOCIATES, INC.
ENGINEERS PLANNERS SURVEYORS
2200 PARK AVENUE NORTH, WINTER PARK, FLORIDA 32789 (407) 644-4068
CERTIFICATE OF AUTHORIZATION NUMBER LB68

RESERVE AT LAKE BUTLER SOUND UNIT 2

SECTION 19, TOWNSHIP 23 SOUTH, RANGE 28 EAST

ORANGE COUNTY, FLORIDA



LINE TABLE - THIS SHEET ONLY (ALL DISTANCES ARE IN FEET)

NUMBER	BEARING	DISTANCE
L10	S53°47'41"W	25.00'
L11	S36°12'19"E	40.00'
L12	N53°47'41"E	25.00'
L13	N36°12'19"W	10.00'
L14	N53°47'41"E	2.25'
L15	N36°12'19"W	66.87'

CURVE TABLE - THIS SHEET ONLY (ALL DISTANCES ARE IN FEET)

NUMBER	RADIUS	DELTA	LENGTH	CHORD	TANGENT	CHORD BEARING
C1	500.00	17°40'25"	154.23	153.62	77.73	S32°02'56"E
C2	1000.00	07°08'36"	124.67	124.59	62.42	S37°18'51"E
C3	1000.00	04°44'02"	82.62	82.60	41.33	S38°06'34"E
C4	825.00	38°30'28"	420.06	412.19	218.31	S19°13'21"E
C5	1200.00	15°19'09"	320.84	318.89	161.38	S57°12'09"W
C6	825.00	18°05'47"	260.57	259.49	131.38	S40°29'42"W
C7	425.00	12°26'59"	92.35	92.17	46.36	N43°19'05"E
C8	1600.00	12°59'23"	362.74	361.96	182.15	N56°02'16"E
C9	1625.00	11°01'51"	312.85	312.37	156.91	S55°03'30"W
C10	1575.00	11°20'09"	311.61	311.10	156.32	S55°12'39"W
C11	400.00	12°26'59"	86.91	86.74	43.63	S43°19'05"W
C12	450.00	12°26'59"	97.78	97.59	49.08	S43°19'05"W
C13	850.00	18°05'47"	268.46	267.35	135.36	S40°29'42"W
C14	800.00	18°05'47"	252.67	251.62	127.40	N40°29'42"E
C15	1175.00	13°13'19"	271.15	270.55	136.18	N56°09'14"E
C16	1225.00	12°29'24"	267.04	266.51	134.05	N55°47'17"E
C17	200.00	22°13'31"	77.58	77.10	39.28	N71°23'46"W
C18	650.00	38°30'28"	436.88	428.68	227.04	N19°13'21"W
C19	600.00	10°11'07"	106.66	106.52	53.47	N27°36'05"W
C20	875.00	04°44'02"	80.56	80.53	40.30	N38°06'34"E
C21	1025.00	02°22'40"	42.54	42.53	21.27	N34°55'53"W
C22	25.00	98°30'56"	42.11	37.31	28.02	S12°18'58"W
C23	25.00	05°22'43"	37.25	33.90	23.06	N76°25'54"W
C24	25.00	98°09'12"	42.63	37.76	28.84	S12°57'23"W
C25	25.00	84°32'28"	36.89	33.63	22.72	N74°57'52"W
C26	625.00	01°40'20"	18.24	18.24	9.12	S37°38'25"E
C27	875.00	04°56'39"	84.13	84.11	42.09	S38°24'49"E
C28	1625.00	03°26'51"	97.77	97.76	48.90	S58°51'01"W
C29	1625.00	03°48'37"	108.07	108.05	54.05	S55°13'17"W
C30	1625.00	03°46'23"	107.01	106.99	53.53	S55°12'46"W
C31	1575.00	02°07'10"	58.26	58.26	29.13	N50°36'10"E
C32	1575.00	05°07'24"	140.84	140.79	70.46	N54°13'27"E
C33	1575.00	04°05'35"	112.51	112.49	56.28	S58°49'56"W
C34	450.00	06°50'52"	54.44	54.40	27.25	S46°04'39"W
C35	450.00	05°31'07"	43.34	43.33	21.69	S39°51'09"W
C36	400.00	07°30'02"	52.36	52.33	26.22	S40°50'37"W
C37	400.00	04°56'57"	34.55	34.54	17.29	S47°04'06"W
C38	1185.00	03°21'12"	69.35	69.34	34.69	S33°07'24"W
C39	800.00	04°08'33"	57.84	57.83	28.93	S33°31'05"W
C40	800.00	11°08'15"	154.61	154.57	77.65	S41°07'59"W
C41	800.00	02°51'59"	40.02	40.02	20.01	S48°00'30"W
C42	850.00	07°44'55"	114.95	114.87	57.56	N45°40'07"E
C43	850.00	08°09'59"	121.15	121.05	60.68	N37°42'41"E
C44	1225.00	04°41'11"	100.20	100.17	50.13	N58°41'24"E
C45	1225.00	05°41'03"	121.53	121.48	60.81	N54°30'17"E
C46	1225.00	03°27'10"	45.31	45.31	22.66	N50°36'10"E
C47	1175.00	00°25'32"	8.72	8.72	4.36	S49°45'20"W
C48	1175.00	07°00'17"	143.65	143.56	71.91	S53°28'15"W
C49	1175.00	05°47'30"	118.78	118.72	59.44	S59°52'08"W
C50	650.00	10°35'33"	120.17	120.00	60.26	S22°10'17"E
C51	650.00	10°35'33"	120.17	120.00	60.26	S32°45'50"E
C52	650.00	07°24'58"	4.72	4.72	2.36	S38°19'08"E
C53	1421.82	05°08'33"	128.03	127.88	64.06	S33°37'32"E
C54	1421.82	05°05'43"	126.44	126.40	63.26	S28°29'54"E
C55	1421.82	06°29'39"	161.15	161.07	80.66	S22°42'13"E
C56	1421.82	06°15'44"	155.40	155.32	77.78	S18°19'32"E
C57	1025.00	00°16'21"	4.67	4.67	2.44	S33°52'43"E
C58	525.00	00°31'49"	4.98	4.98	2.43	S40°31'14"E
C59	625.00	36°50'08"	401.81	394.93	208.13	N18°23'11"W
C121	400.00	06°40'20"	46.58	46.55	23.32	N71°46'55"E
C122	400.00	06°50'44"	47.79	47.76	23.92	N65°01'23"E

NOTICE: THIS PLAT, AS RECORDED IN ITS GRAPHICAL FORM, IS THE OFFICIAL DEPICTION OF THE SUBDIVIDED LANDS DESCRIBED HEREIN AND WILL IN NO CIRCUMSTANCES BE SUPPLANTED IN AUTHORITY BY ANY OTHER GRAPHICAL OR DIGITAL FORM OF THE PLAT. THERE MAY BE ADDITIONAL RESTRICTIONS THAT ARE NOT RECORDED ON THIS PLAT THAT MAY BE FOUND IN THE PUBLIC RECORDS OF THIS COUNTY.

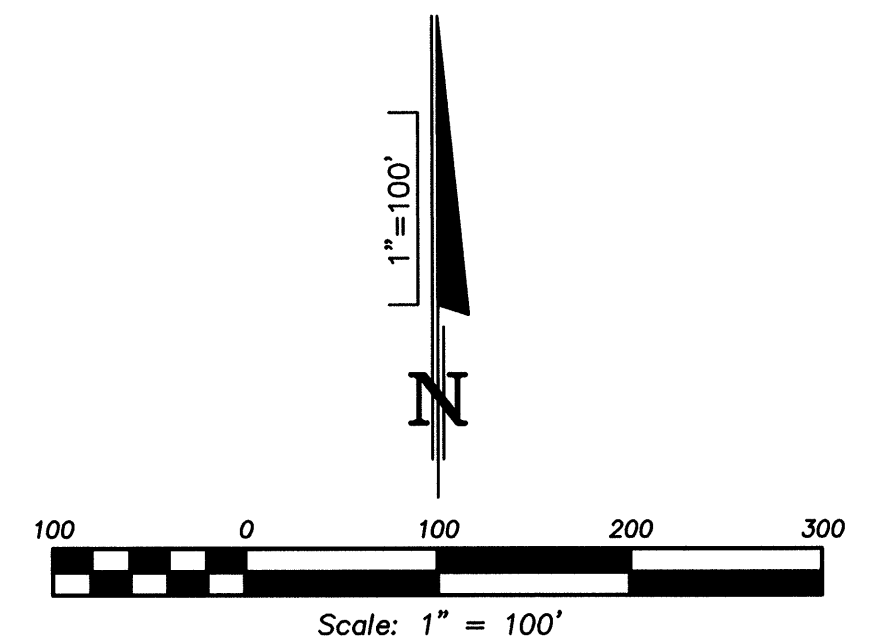
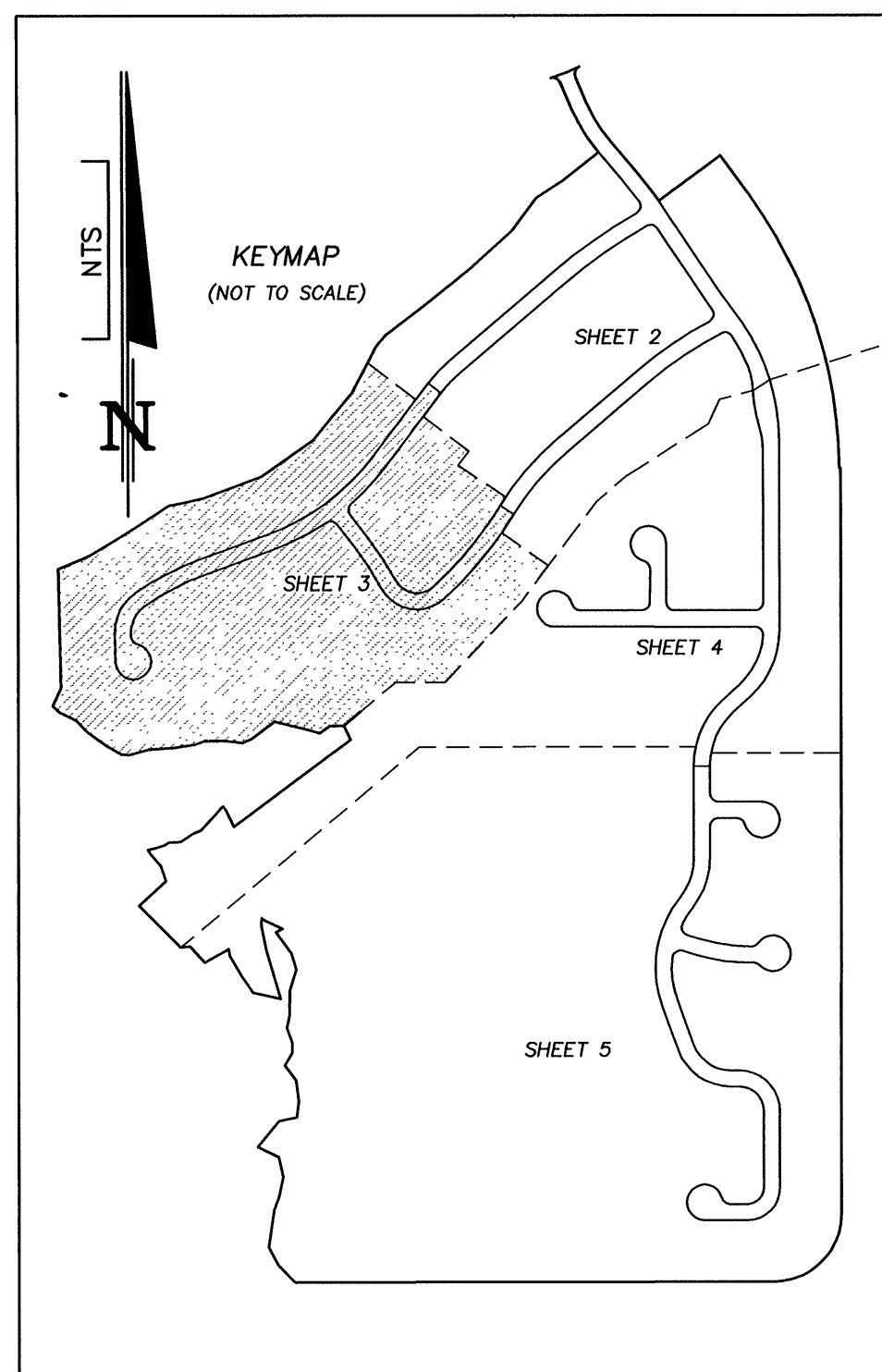
DONALD W. MCINTOSH ASSOCIATES, INC.
 ENGINEERS PLANNERS SURVEYORS
 2200 PARK AVENUE NORTH, WINTER PARK, FLORIDA 32789 (407) 644-4068
 Certificate of Authorization Number LB68

File Name: F:\PROJ\2000\20004\SDW\PLAT1\C-1sh12.DWG

RESERVE AT LAKE BUTLER SOUND UNIT 2

SECTION 19, TOWNSHIP 23 SOUTH, RANGE 28 EAST

ORANGE COUNTY, FLORIDA



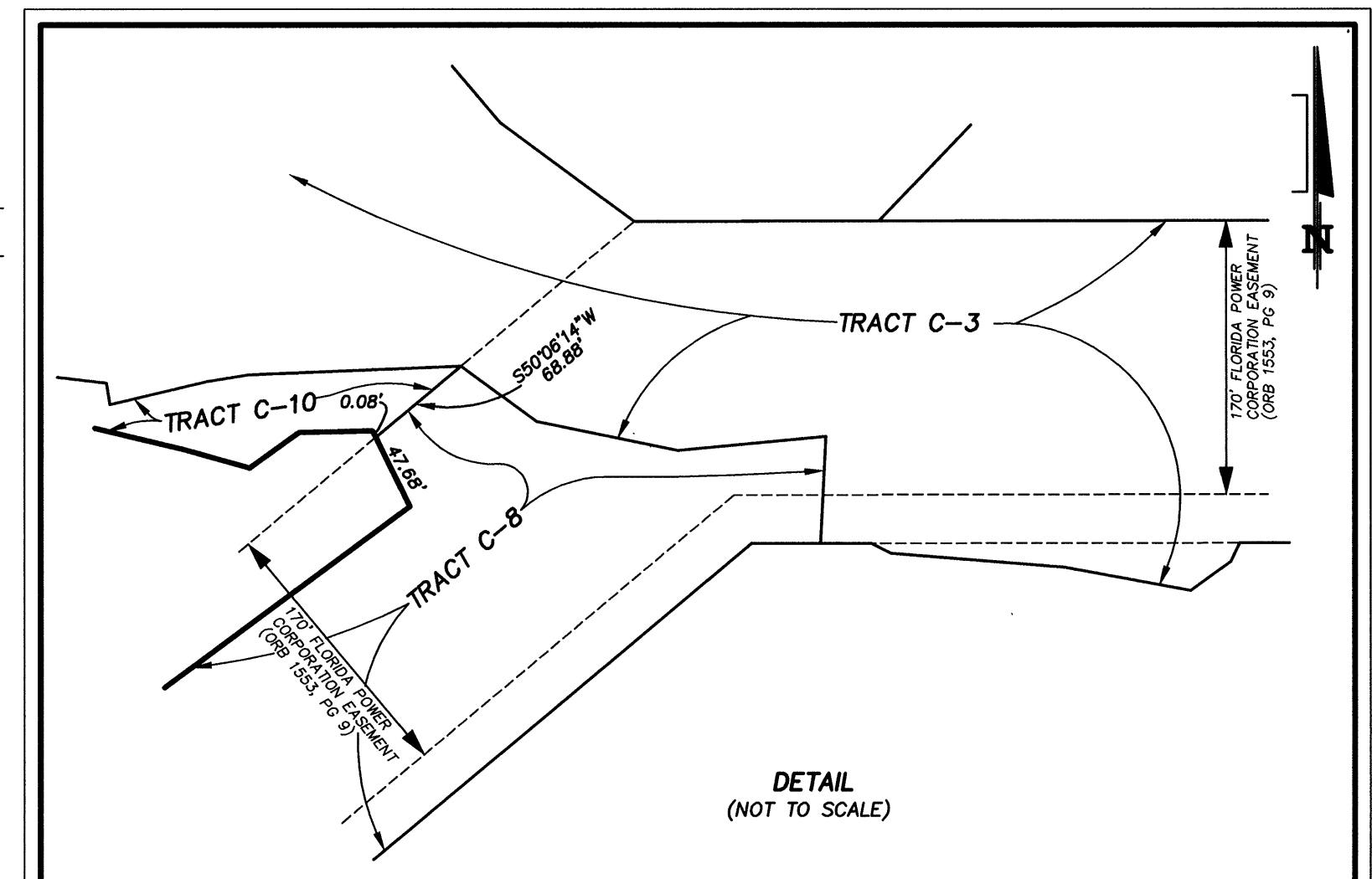
LINE TABLE
THIS SHEET ONLY
(ALL DISTANCES ARE IN FEET)

NUMBER	BEARING	DISTANCE
L1	S01°19'37"E	9.46'
L2	S88°40'23"W	30.00'
L4	S05°22'24"E	31.04'
L5	N05°22'24"W	34.65'
L6	S84°09'47"E	48.34'
L7	S84°09'47"E	14.08'
L10	N21°11'38"E	14.32'
L11	N41°29'59"E	73.03'
L12	S87°05'44"E	37.74'

(L3, L8 & L9 NOT USED)

CURVE TABLE
THIS SHEET ONLY
(ALL DISTANCES ARE IN FEET)

NUMBER	RADIUS	DELTA	LENGTH	CHORD	TANGENT	CHORD BEARING
C61	1135.00	16°28'01"	325.54	324.43	163.90	S39°39'49"W
C62	1160.00	16°28'01"	332.71	331.57	167.51	S39°39'49"W
C63	1185.00	16°28'01"	339.88	338.72	171.12	S39°39'49"W
C64	125.00	103°31'46"	225.86	196.37	158.65	N80°21'18"W
C65	100.00	103°31'46"	180.69	157.10	126.92	N80°21'18"W
C66	75.00	103°31'46"	135.52	117.82	95.19	N80°21'18"W
C67	1025.00	08°49'21"	157.63	157.87	79.07	N33°00'05"W
C68	1000.00	08°49'21"	153.98	153.83	77.14	N33°00'05"W
C69	875.00	08°49'21"	150.13	149.98	75.21	N33°00'05"W
C70	25.00	86°25'00"	37.71	34.23	23.48	N80°37'15"W
C71	25.00	86°25'00"	37.71	34.23	23.48	N05°47'45"E
C72	775.00	11°54'39"	161.11	160.82	80.85	N43°02'55"E
C73	750.00	32°53'50"	430.62	424.73	221.43	S53°32'31"W
C74	725.00	32°53'50"	416.27	410.58	214.05	S53°32'31"W
C75	775.00	13°49'11"	186.93	186.48	93.92	S63°04'50"W
C76	875.00	14°20'59"	219.14	218.57	110.15	S62°48'57"W
C77	850.00	14°20'59"	212.88	212.33	107.00	S62°48'57"W
C78	825.00	14°20'59"	206.62	206.08	103.85	S62°48'57"W
C79	100.00	56°58'05"	99.43	65.39	54.26	S27°09'25"W
C80	125.00	56°58'05"	124.28	119.23	67.82	S27°09'25"W
C81	150.00	56°58'05"	149.14	143.07	81.39	S27°09'25"W
C82	55.00	255°31'21"	245.28	86.96	-71.00	N50°54'42"E
C83	25.00	75°31'21"	32.95	30.62	19.36	N39°05'18"W
C84	55.00	96°36'40"	92.74	82.14	61.74	S29°33'58"E
C85	55.00	40°48'26"	39.17	36.35	20.46	S40°09'56"W
C86	55.00	70°28'08"	67.66	63.47	38.86	N84°11'16"W
C87	55.00	47°37'05"	45.71	44.41	24.27	S25°08'10"W
C88	150.00	17°09'23"	44.91	44.75	22.63	S07°15'04"W
C89	150.00	33°01'27"	86.46	85.27	44.47	S32°20'29"W
C90	150.00	08°47'15"	17.77	17.76	8.90	S57°14'50"W
C91	875.00	07°02'02"	107.42	107.35	53.78	S59°09'28"W
C92	875.00	07°18'57"	111.72	111.65	55.94	S68°19'58"W
C93	825.00	00°01'09"	12.27	12.27	6.14	N69°33'52"E
C94	825.00	13°29'50"	194.35	193.90	97.63	S62°23'23"W
C95	100.00	28°22'46"	49.53	49.03	25.28	N41°27'04"E
C96	100.00	28°35'19"	49.90	49.38	25.48	N12°58'02"E
C97	725.00	04°48'26"	60.83	60.81	30.43	S67°35'13"W
C98	725.00	12°55'55"	163.64	163.29	82.17	N58°43'03"E
C99	725.00	12°22'35"	156.61	156.30	78.61	N46°03'48"E
C100	725.00	02°46'54"	35.20	35.19	17.60	N38°29'03"E
C101	775.00	04°23'34"	59.42	59.40	29.72	N39°17'23"E
C102	775.00	07°31'05"	101.69	101.62	50.92	N45°14'42"E
C103	1025.00	03°15'53"	58.40	58.40	29.21	N35°46'49"W
C104	1025.00	05°33'28"	99.43	99.39	49.75	N31°22'09"W
C105	975.00	04°01'44"	68.56	68.55	34.29	S30°36'17"E
C106	975.00	04°47'37"	81.57	81.55	40.81	S35°00'57"E
C107	125.00	12°35'36"	51.51	51.14	28.13	N40°23'42"W
C108	125.00	42°10'17"	92.00	89.94	48.20	N73°17'08"W
C109	125.00	37°44'54"	82.35	80.87	42.73	S66°45'16"W
C110	1185.00	01°16'13"	26.27	26.27	13.14	S47°14'43"W
C111	1185.00	05°54'18"	122.13	122.08	61.12	S43°39'27"W
C112	1185.00	05°54'18"	122.13	122.08	61.12	S37°45'09"W
C113	850.00	02°10'53"	32.36	32.36	16.18	N32°23'15"E
C114	1135.00	05°04'30"	100.53	100.50	50.30	N33°59'03"E
C115	1135.00	07°21'56"	145.91	145.81	73.05	N40°12'18"E
C116	1135.00	03°59'35"	79.10	79.08	39.57	N45°03'02"E
C117	775.00	07°09'20"	96.79	96.73	48.48	N59°44'55"E
C118	775.00	06°39'51"	90.14	90.09	45.12	N68°39'31"E
C119	750.00	17°24'11"	227.80	226.83	114.79	S81°17'20"W
C120	750.00	15°29'39"	202.82	202.20	102.03	S44°50'25"W



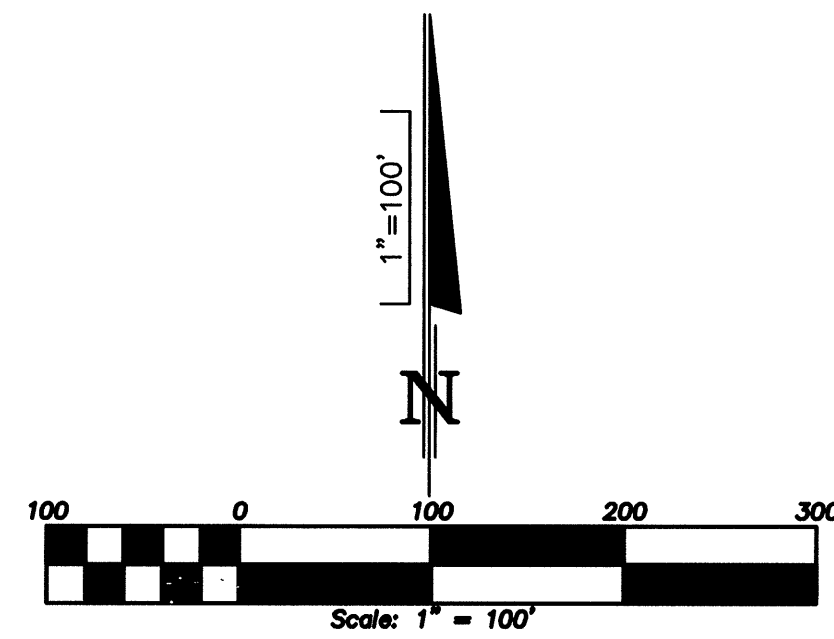
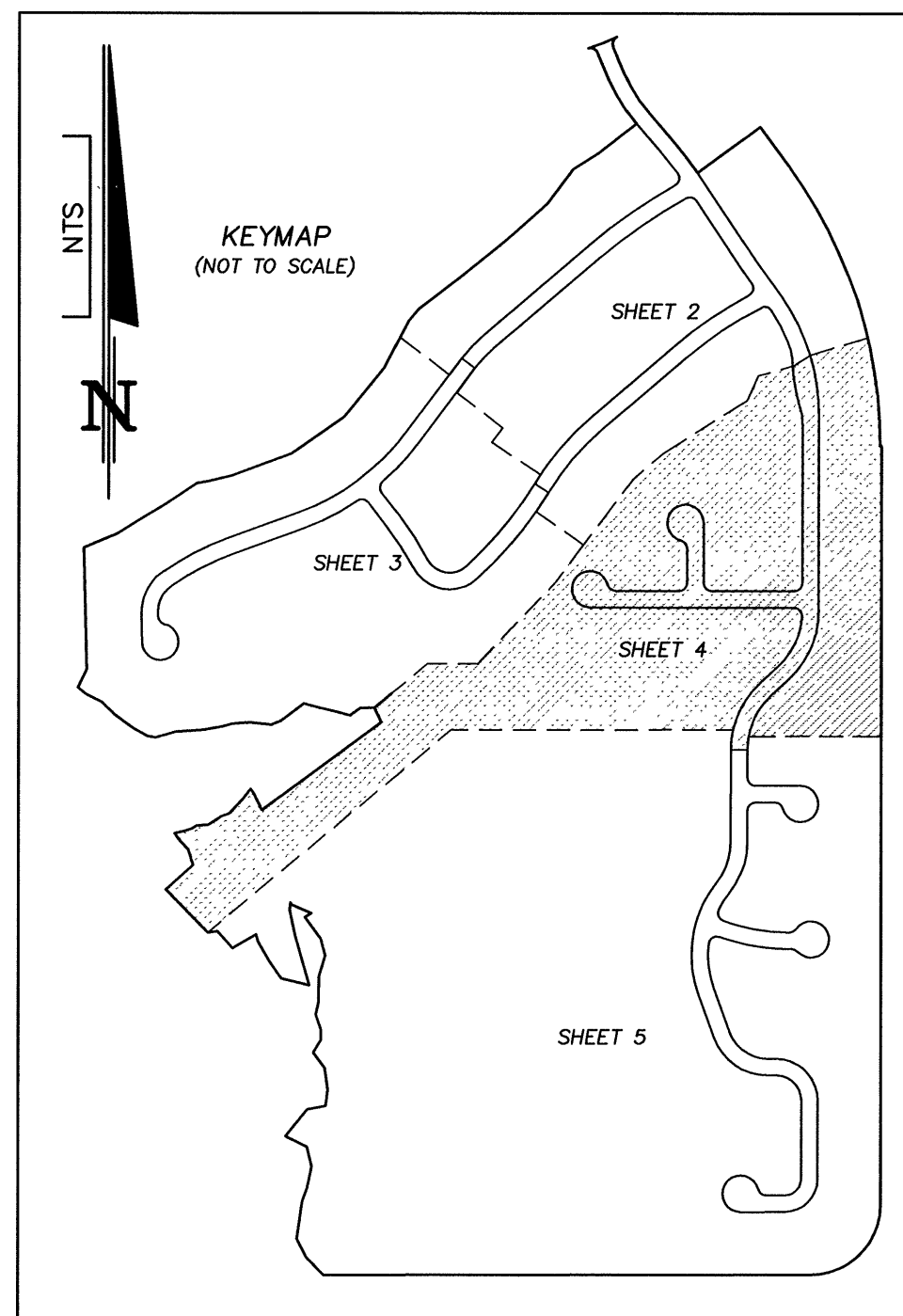
NOTICE: THIS PLAT, AS RECORDED IN ITS GRAPHICAL FORM, IS THE OFFICIAL DEPICTION OF THE SUBDIVIDED LANDS DESCRIBED HEREIN AND WILL IN NO CIRCUMSTANCES BE SUPPLANTED IN AUTHORITY BY ANY OTHER GRAPHICAL OR DIGITAL FORM OF THE PLAT. THERE MAY BE ADDITIONAL RESTRICTIONS THAT ARE NOT RECORDED ON THIS PLAT THAT MAY BE FOUND IN THE PUBLIC RECORDS OF THIS COUNTY.

DONALD W. McINTOSH ASSOCIATES, INC.
ENGINEERS PLANNERS SURVEYORS
2200 PARK AVENUE NORTH, WINTER PARK, FLORIDA 32789 (407) 644-4068
Certificate of Authorization Number LB68

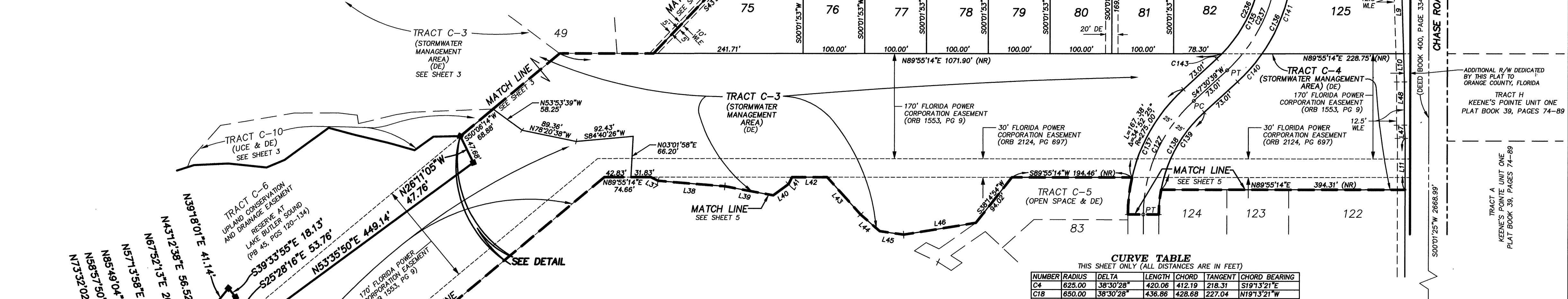
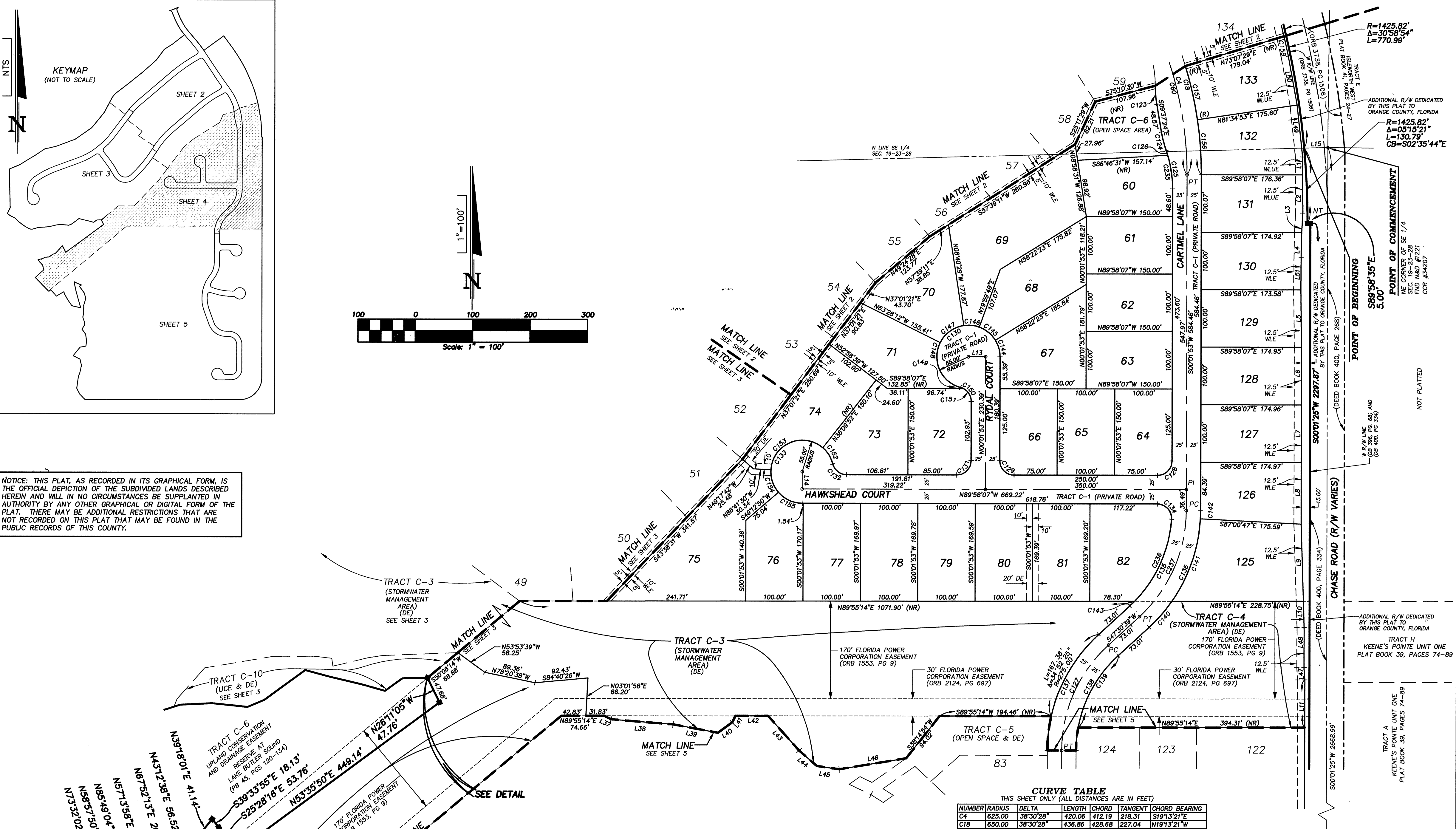
RESERVE AT LAKE BUTLER SOUND UNIT 2

SECTION 19, TOWNSHIP 23 SOUTH, RANGE 28 EAST

ORANGE COUNTY, FLORIDA



NOTICE: THIS PLAT, AS RECORDED IN ITS GRAPHICAL FORM, IS THE OFFICIAL DEPICTION OF THE SUBDIVIDED LANDS DESCRIBED HEREIN AND WILL IN NO CIRCUMSTANCES BE SUPPLANTED IN AUTHORITY BY ANY OTHER GRAPHICAL OR DIGITAL FORM OF THE PLAT. THERE MAY BE ADDITIONAL RESTRICTIONS THAT ARE NOT RECORDED ON THIS PLAT THAT MAY BE FOUND IN THE PUBLIC RECORDS OF THIS COUNTY.



CURVE TABLE
THIS SHEET ONLY (ALL DISTANCES ARE IN FEET)

NUMBER	RADIUS	DELTA	LENGTH	CHORD	TANGENT	CHORD BEARING
C18	625.00	38°30'28"	420.06	412.19	218.31	S19°31'21"E
C60	625.00	36°50'08"	401.81	394.93	208.13	N18°23'11"W
C123	200.00	09°20'24"	32.60	32.57	16.34	S04°57'12"E
C124	200.00	09°37'04"	33.57	33.53	16.83	S14°25'56"E
C125	200.00	19°16'22"	67.27	66.96	33.96	S09°36'17"E
C126	200.00	02°24'31"	8.41	8.41	4.20	N18°02'13"W
C127	250.00	47°28'48"	207.17	201.29	109.95	S23°46'16"W
C128	25.00	90°00'00"	39.27	35.36	25.00	S45°01'53"W
C129	25.00	90°00'00"	39.27	35.36	25.00	N44°58'07"W
C130	55.00	255°31'21"	245.28	86.96	-71.00	S52°16'13"W
C131	25.00	90°00'00"	39.27	35.36	25.00	S45°01'53"W
C132	25.00	75°31'21"	32.95	30.62	19.36	N52°22'26"W
C133	55.00	255°34'31"	245.33	86.93	-70.94	S37°45'59"W
C134	25.00	93°52'29"	40.98	36.53	26.75	S43°01'52"E
C135	225.00	43°36'17"	171.24	167.13	90.00	S25°42'31"W
C136	275.00	47°28'48"	227.89	221.42	120.94	N23°46'16"E
C137	275.00	47°28'48"	227.89	221.42	120.94	S23°46'16"W
C138	225.00	47°28'48"	188.45	181.16	98.95	N23°46'16"E
C139	225.00	37°12'40"	146.13	143.57	75.75	N28°54'19"E
C140	275.00	12°33'19"	60.26	60.14	30.25	N41°14'00"E
C141	275.00	31°58'07"	153.44	151.46	78.77	N18°58'17"E
C142	275.00	02°57'20"	14.19	14.18	7.09	N01°30'33"E
C143	225.00	03°01'51"	11.90	11.90	5.95	N45°59'44"E
C144	55.00	31°39'30"	35.39	30.00	15.59	N15°47'52"W
C145	55.00	38°22'34"	36.84	36.15	19.14	N50°48'54"W
C146	55.00	28°40'18"	27.52	27.24	14.06	N84°20'20"W
C147	55.00	54°47'43"	52.60	50.62	28.51	S53°55'40"W
C148	55.00	102°01'16"	97.93	85.50	67.94	S24°28'50"E
C149	25.00	135°17'27"	5.90	5.89	2.97	S88°34'14"E
C150	25.00	75°31'21"	32.95	30.62	19.36	S37°43'47"E
C151	25.00	61°59'34"	27.05	25.75	15.02	N30°57'53"W
C152	55.00	34°53'19"	33.49	32.98	17.28	S31°53'25"E
C153	55.00	127°21'25"	122.25	98.60	111.18	N88°59'13"E
C154	55.00	44°05'41"	42.33	41.29	22.27	N18°44'20"W
C155	55.00	49°14'06"	47.28	45.82	25.20	N53°24'13"W
C156	650.00	08°27'01"	95.86	95.78	48.02	S04°11'37"E
C157	650.00	08°27'23"	95.94	95.85	48.06	S12°38'49"E
C158	1421.62	01°25'29"	35.35	35.35	17.68	S12°28'55"E
C235	200.00	16°51'51"	58.87	58.65	29.65	N06°24'02"W
C236	225.00	40°34'26"	159.34	156.03	83.17	N24°11'35"E
C237	250.00	47°28'48"	207.17	201.29	109.95	S23°46'16"W

LINE TABLE
THIS SHEET ONLY (ALL DISTANCES ARE IN FEET)

NUMBER	BEARING	DISTANCE
L1	S00°12'22"E	31.07
L2	S00°11'22"E	66.25
L3	S02°53'47"W	33.87
L4	N01°16'02"E	42.99
L5	S04°53'13"E	100.01
L6	S00°01'25"W	100.00
L7	S00°01'25"W	100.00
L8	S00°01'25"W	107.62
L9	S01°47'04"E	133.63
L10	S01°47'04"E	45.25
L11	S00°01'25"W	83.29
L12	N89°58'07"W	30.00
L13	N89°58'07"W	30.00
L14	N00°03'54"W	30.00
L15	S88°30'09"W	40.99
L16	S88°30'09"W	13.71
L17	S85°22'59"E	108.07
L18	S79°32'21"E	78.49
L19	S81°42'43"E	39.18
L20	N54°05'35"E	30.74
L21	N28°02'56"E	12.78
L22	N89°58'14"E	56.87
L23	S42°05'55"E	81.27
L24	S49°16'16"E	41.03
L25	S81°42'43"E	39.18
L26	N03°38'01"E	118.55
L27	S03°58'27"E	21.51
L28	S00°08'48"W	70.01
L29	S08°02'21"E	90.76
L30	S02°27'00"E	86.71
L31	N00°28'57"E	57.02

(L16-L36 NOT USED)

DONALD W. McINTOSH ASSOCIATES, INC.
ENGINEERS
PLANNERS
SURVEYORS
2200 PARK AVENUE NORTH, WINTER PARK, FLORIDA 32789 (407) 644-4088
Certificate of Authorization Number LB68

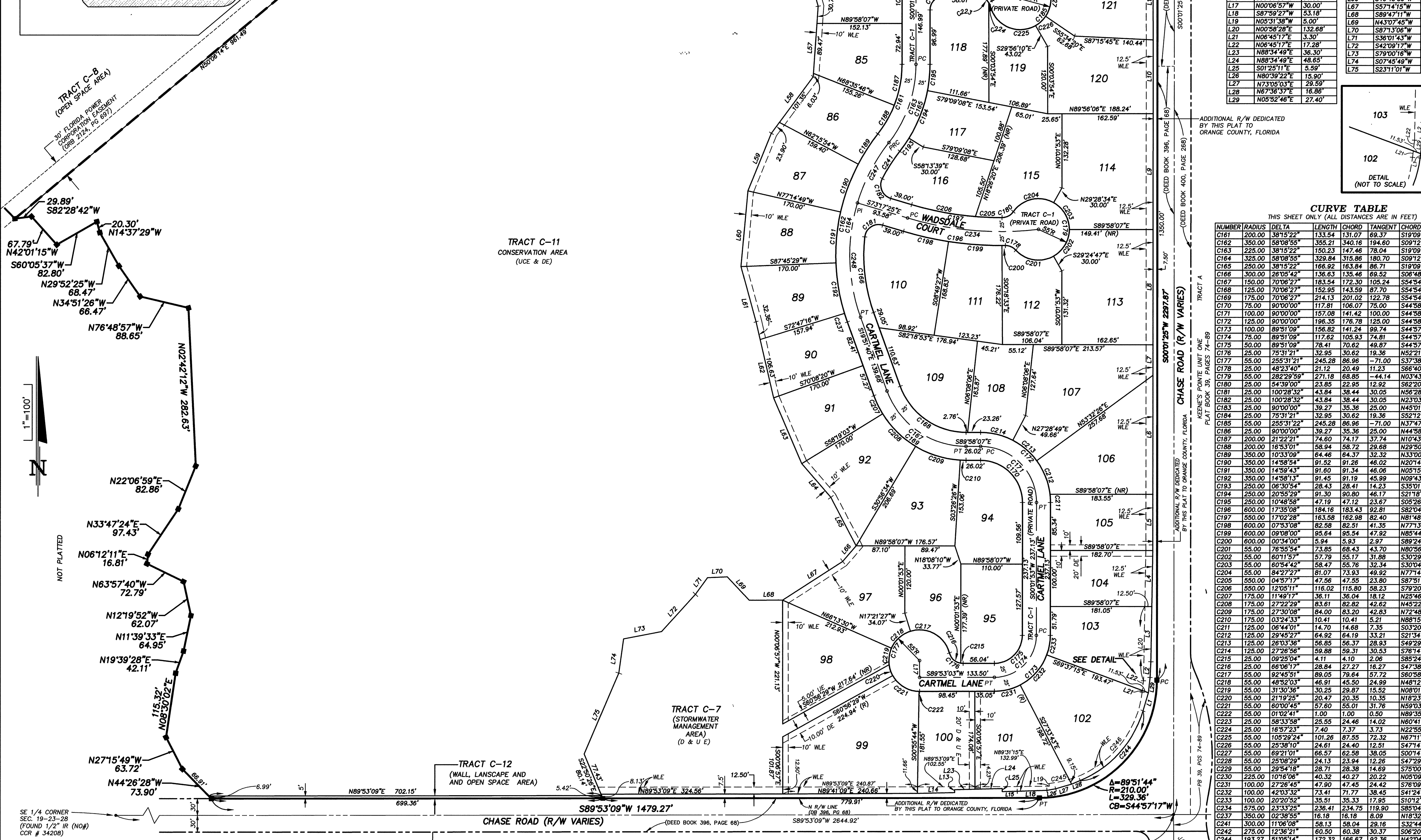
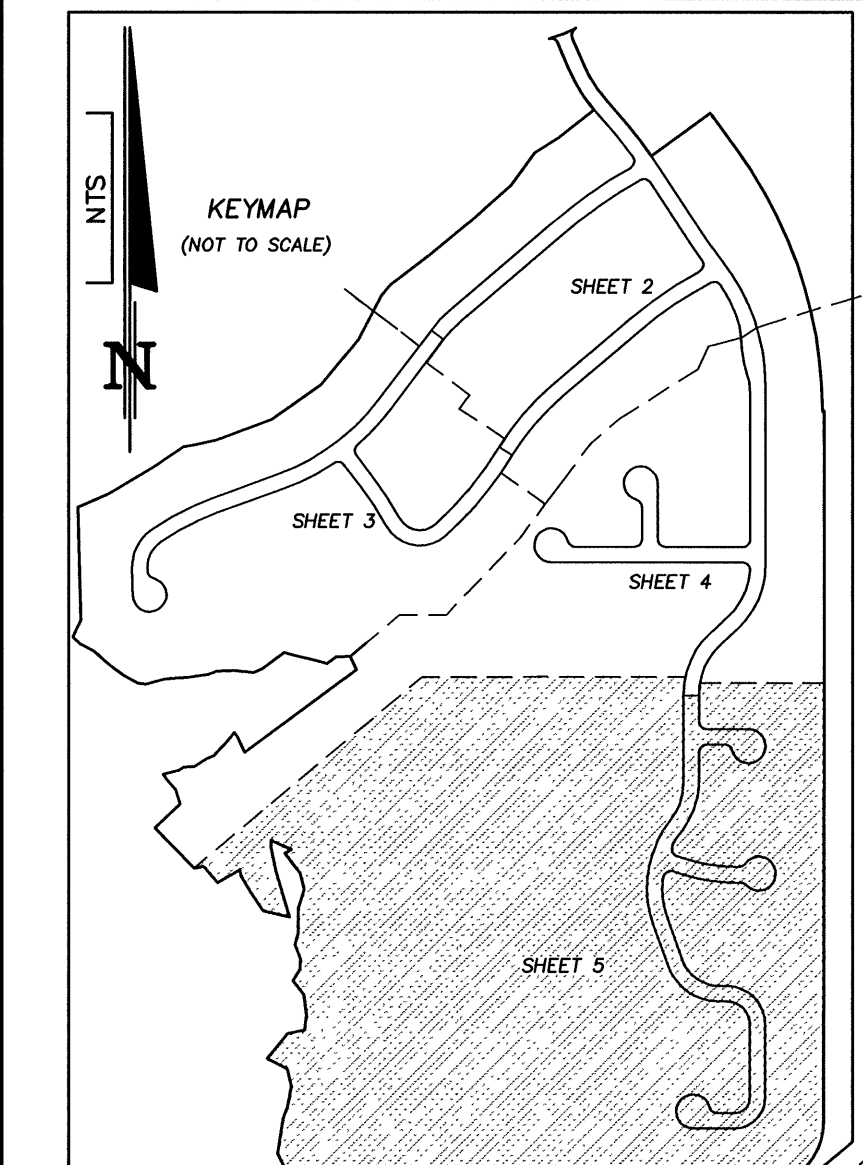
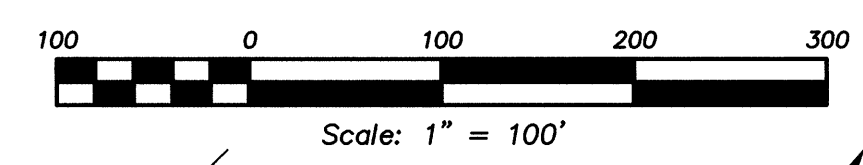
F:\PROJ2000\20004\SDWG\PLAT\C-1ah14.DWG

RESERVE AT LAKE BUTLER SOUND UNIT 2

SECTION 19, TOWNSHIP 23 SOUTH, RANGE 28 EAST

ORANGE COUNTY, FLORIDA

NOTICE: THIS PLAT, AS RECORDED IN ITS GRAPHICAL FORM, IS THE OFFICIAL DEPICTION OF THE SUBDIVIDED LANDS DESCRIBED HEREIN AND WILL IN NO CIRCUMSTANCES BE SUPPLANTED IN AUTHORITY BY ANY OTHER GRAPHICAL OR DIGITAL FORM OF THE PLAT. THERE MAY BE ADDITIONAL RESTRICTIONS THAT ARE NOT RECORDED ON THIS PLAT THAT MAY BE FOUND IN THE PUBLIC RECORDS OF THIS COUNTY.



NE CORNER OF SE 1/4 SEC. 19-23-28 (FOUND NAIL AND DISC (CCR # 34207))

TRACT H
KEENE'S POINTE UNIT ONE
PLAT BOOK 39, PAGES 74-89

ADDITIONAL R/W DEDICATED BY THIS PLAT TO ORANGE COUNTY, FLORIDA (DEED BOOK 400, PAGE 334)

W.R.W. LINE (DEED BOOK 396, PAGE 68) AND (DEED BOOK 400, PAGE 334)

ADDITIONAL R/W DEDICATED BY THIS PLAT TO ORANGE COUNTY, FLORIDA (DEED BOOK 396, PAGE 68)

5000' 25" W R/W VARIES (DEED BOOK 400, PAGE 288)

5000' 25" W R/W VARIES (DEED BOOK 400, PAGE 288)

TRACT A
KEENE'S POINTE UNIT ONE
PLAT BOOK 39, PAGES 74-89

ADDITIONAL R/W DEDICATED BY THIS PLAT TO ORANGE COUNTY, FLORIDA (DEED BOOK 396, PAGE 68)

5000' 25" W R/W VARIES (DEED BOOK 400, PAGE 288)

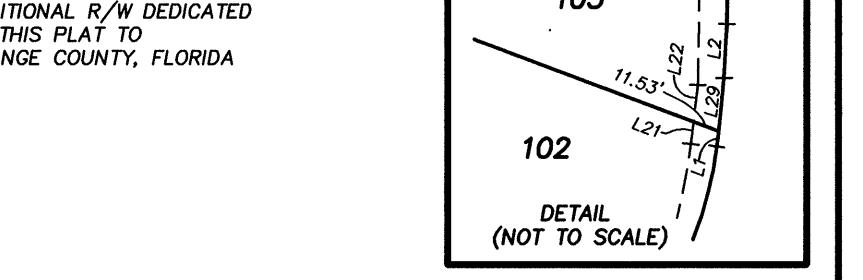
TRACT B
KEENE'S POINTE UNIT ONE
PLAT BOOK 39, PAGES 74-89

ADDITIONAL R/W DEDICATED BY THIS PLAT TO ORANGE COUNTY, FLORIDA (DEED BOOK 396, PAGE 68)

5000' 25" W R/W VARIES (DEED BOOK 400, PAGE 288)

LINE TABLE
THIS SHEET ONLY (ALL DISTANCES ARE IN FEET)

NUMBER	BEARING	DISTANCE
L1	S18°31'23"W	33.67
L2	S03°04'07"W	27.87
L3	N00°58'28"E	98.76
L4	N00°58'28"E	100.01
L5	S47°15'57"E	100.00
L6	S04°00'22"W	212.92
L7	N00°01'25"E	54.34
L8	N00°01'25"E	205.00
L9	N00°01'25"E	206.91
L10	N00°01'25"E	131.49
L11	N00°01'01"W	136.18
L12	N00°01'25"E	140.39
L13	N01°25'11"W	5.09
L14	N88°34'49"E	66.60
L15	N88°34'49"E	26.80
L16	S00°01'53"W	30.00
L17	N00°06'57"W	30.00
L18	S87°39'21"W	53.18
L19	N05°31'58"W	5.00
L20	N00°58'28"E	132.68
L21	N06°45'17"E	3.30
L22	N06°45'17"E	17.28
L23	N88°34'49"E	36.30
L24	N88°34'49"E	48.65
L25	S01°25'11"E	5.59
L26	N80°39'22"E	15.90
L27	N73°05'03"E	29.59
L28	N87°36'37"E	16.86
L29	N05°52'40"E	27.40



CURVE TABLE
THIS SHEET ONLY (ALL DISTANCES ARE IN FEET)

NUMBER	RADIUS	DELTA	LENGTH	CHORD	TANGENT	CHORD BEARING
C161	200.00	38°15'22"	133.54	131.07	69.37	S10°05'34"W
C162	350.00	58°08'55"	358.21	348.14	187.74	S54°53'53"E
C163	225.00	38°15'22"	150.23	147.46	78.04	S10°05'34"W
C164	325.00	58°08'55"	329.84	315.86	180.70	S09°12'48"W
C165	250.00	38°15'22"	166.92	163.64	86.71	S10°05'34"W
C166	300.00	26°05'42"	136.63	135.46	69.52	S06°48'49"E
C167	150.00	70°06'27"	163.54	172.30	105.24	S54°53'53"E
C168	125.00	70°06'27"	152.95	143.59	87.70	S54°53'53"E
C169	175.00	70°06'27"	214.13	201.02	122.78	S54°53'53"E
C170	75.00	90°00'00"	117.81	106.07	75.00	S44°58'07"E
C171	100.00	90°00'00"	157.08	141.42	100.00	S44°58'07"E
C172	125.00	90°00'00"	196.35	176.78	125.00	S44°58'07"E
C173	100.00	89°51'09"	156.82	141.24	99.74	S44°57'28"W
C174	75.00	89°51'09"	117.62	105.63	74.61	S44°57'28"W
C175	50.00	89°51'09"	78.41	70.62	49.87	S44°57'28"W
C176	25.00	75°31'21"	32.95	30.62	19.36	S52°21'17"W
C177	55.00	255°31'21"	245.28	86.96	-71.00	S37°38'43"W
C178	25.00	48°23'40"	21.12	20.49	11.23	S86°40'43"E
C179	55.00	282°29'59"	271.18	68.85	-44.14	N03°33'53"W
C180	25.00	54°39'00"	23.85	22.95	12.92	S82°20'37"W
C181	25.00	100°28'32"	43.84	38.44	30.05	N56°28'19"E
C182	25.00	100°28'32"	43.84	38.44	30.05	N23°03'09"W
C183	25.00	90°00'00"	39.27	35.36	25.00	N45°01'53"E
C184	25.00	75°31'21"	32.95	30.62	19.36	S52°21'17"W
C185	55.00	60°51'32"	245.28	86.96	-71.00	N174°34'54"E
C186	25.00	90°00'00"	39.27	35.36	25.00	N44°58'07"W
C187	200.00	21°22'21"	74.60	74.17	37.74	N10°43'04"E
C188	200.00	16°53'01"	58.94	58.72	29.68	N29°50'45"E
C189	350.00	10°33'09"	64.46	64.37	32.32	N33°00'40"E
C190	350.00	14°58'54"	91.52	91.26	46.02	N20°47'38"E
C191	350.00	14°58'43"	91.60	91.34	46.06	N05°15'20"E
C192	350.00	14°58'13"	91.45	91.19	45.99	N09°43'38"W
C193	250.00	06°30'54"	28.43	28.41	14.23	S35°01'48"W
C194	250.00	20°55'29"	91.30	90.80	46.17	S21°18'36"W
C195	250.00	10°46'58"	47.19	47.12	23.67	S05°28'23"W
C196	600.00	17°55'06"	184.16	182.81	92.81	S80°24'59"E
C197	550.00	17°02'28"	163.58	162.98	82.40	N81°48'39"W
C198	600.00	07°53'08"	82.58	82.51	41.35	N77°13'59"W
C199	600.00	09°08'00"	95.64	95.54	47.92	N85°44'33"W
C200	600.00	00°34'00"	5.94	5.93	2.97	S89°24'27"W
C201	55.00	75°31'21"	23.85	22.48	14.02	N60°41'08"W
C202	25.00	60°51'32"	245.28	86.96	-71.00	N174°34'54"E
C203	55.00	60°54'42"	58.47	55.76	32.34	S30°04'05"E
C204	55.00	84°27'27"	81.07	73.93	49.92	N77°14'51"E
C205	850.00	04°37'17"	47.56	47.55	23.80	S87°51'14"E
C206	550.00	12°05'11"	116.02	115.80	58.23	S79°20'00"E
C207	175.00	11°40'17"	36.11	35.04	18.12	N25°48'19"W
C208	175.00	27°22'29"	83.61	82.82	42.62	N45°22'11"W
C209	175.00	27°30'08"	84.00	83.20	42.83	N72°48'30"W
C210	175.00	03°24'33"	10.41	10.41	5.21	N68°15'50"W
C211	125.00	06°44'01"	14.70	14.68	7.35	S03°20'07"E
C212	125.00	28°45'27"	64.92	64.19	33.21	S21°34'51"E
C213	125.00	28°03'56"	56.85	56.37	28.93	S49°29'23"E
C214	125.00	27°28'56"	59.88	59.31	30.53	S76°14'39"E
C215	25.00	08°25'04"	4.11	4.10	2.06	S85°24'28"E
C216	25.00	68°06'17"	28.84	27.27	16.27	S47°38'45"E
C217	55.00	92°45'51"	89.05	79.64	57.72	S60°58'31"E
C218	55.00	40°52'03"	46.91	46.50	24.99	N49°51'32"E
C219	55.00	03°25'25"	30.25	29.87	15.52	N08°01'12"E
C220	55.00	21°19'25"	20.47	20.35	10.35	N18°23'49"W
C221	55.00	60°04'45"	57.60	55.01	31.76	N59°03'54"W
C222	55.00	01°02'41"	1.00	1.00	0.50	N89°35'37"W
C223	25.00	58°33'58"	25.55	24.46	14.02	N60°41'08"W
C224	25.00	16°57'23"	7.40	7.37	3.73	N25°48'19"W
C225	55.00	105°29'24"	101.26	87.55	72.32	N67°11'29"W
C226	55.00	25°38'10"	24.61	24.40	12.51	S47°14'45"W
C227	55.00	69°21'01"	66.57	62.58	38.05	S00°14'50"E
C228	55.00	25°08'29"	24.13	23.94	12.26	S47°29'35"E
C229	55.00	29°54'18"	28.71	28.38	14.69	S79°00'58"E
C230	225.00	11°04'06"	40.12	40.22	20.22	N05°00'50"E
C231	100.00	27°28'56"	47.90	47.45	24.42	S76°14'39"E
C232	100.00	42°03'32"	73.41	71.77	38.45	S41°24'31"W
C233	100.00	20°20'52"	35.51	35.33	17.95	S10°12'19"W
C234	575.00	23°33'25"	236.41	234.75	119.90	S89°04'08"E
C237	350.00	02°38'53"	58.18	58.19	30.09	N18°32'12"W
C241	300.00	11°06'08"	58.18	58.04	30.09	S32°44'11"W
C242	275.00	12°36'21"	60.50	60.38	30.37	S06°20'04"W
C244	193.27	51°05'14"	172.32	166.67	92.36	N42°04'00"E
C245	185.00	11°22'41"	36.74	36.68	18.43	N78°47'01"E
C246	185.00	86°20'24"	214.20	202.44	120.92	N39°55'29"E
C248	325.00	12°13'40"	122.40	121.87	61.93	S27°29'55"W
C248	325.00	36°34'14"	207.44	203.94	107.39	S01°34'32"E

DONALD W. MCINTOSH ASSOCIATES, INC.
ENGINEERS PLANNERS SURVEYORS
2200 PARK AVENUE NORTH, WINTER PARK, FLORIDA 32789 (407) 644-4088
Certificate of Authorization Number LB68

File Name: F:\PROJ2000\2000A\SDWG\PLAT\G-1845.DWG

(C238-C240 & 243 NOT USED)